

- LEGEND**
- Spelthorne District Boundary
 - Historic Flood Record
 - Surface Watercourse
 - Culverted Watercourse
 - Management Catchments

- Flood Defences**
- Embankment
 - High Ground
 - Simple Culvert
 - Wall

- Flood Outlines for Thames Tributaries**
- 1 in 30 Year (3.3% AEP)
 - 1 in 100 Year (1% AEP)
 - 1 in 100 Year (1%AEP) Plus 20% CC
 - 1 in 100 Year (1%AEP) Plus 25% CC
 - 1 in 100 Year (1% AEP) Plus 35% CC
 - 1 in 100 Year (1% AEP) Plus 81% CC

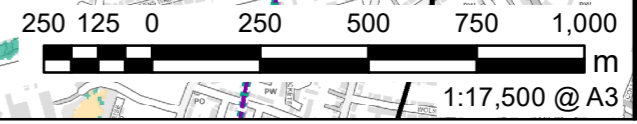
NOTES

Contains Ordnance Survey Data © Crown Copyright and database right 2021. © Environment Agency copyright and/or database right 2021. All rights reserved. Some features of this map are based on digital spatial data from the Centre for Ecology & Hydrology, © NERC (CEH). © Crown copyright and database rights 2021 Ordnance Survey 100024198.

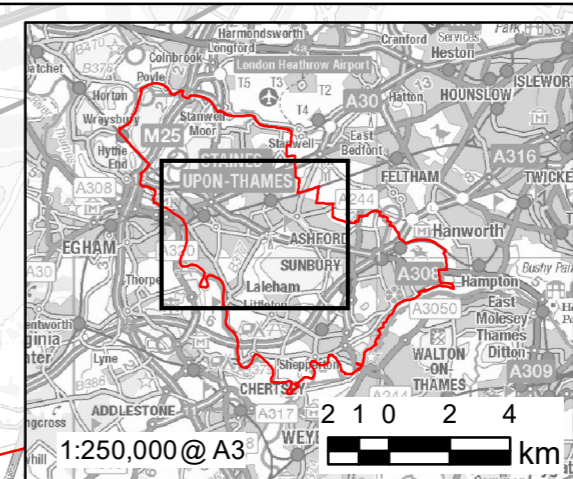
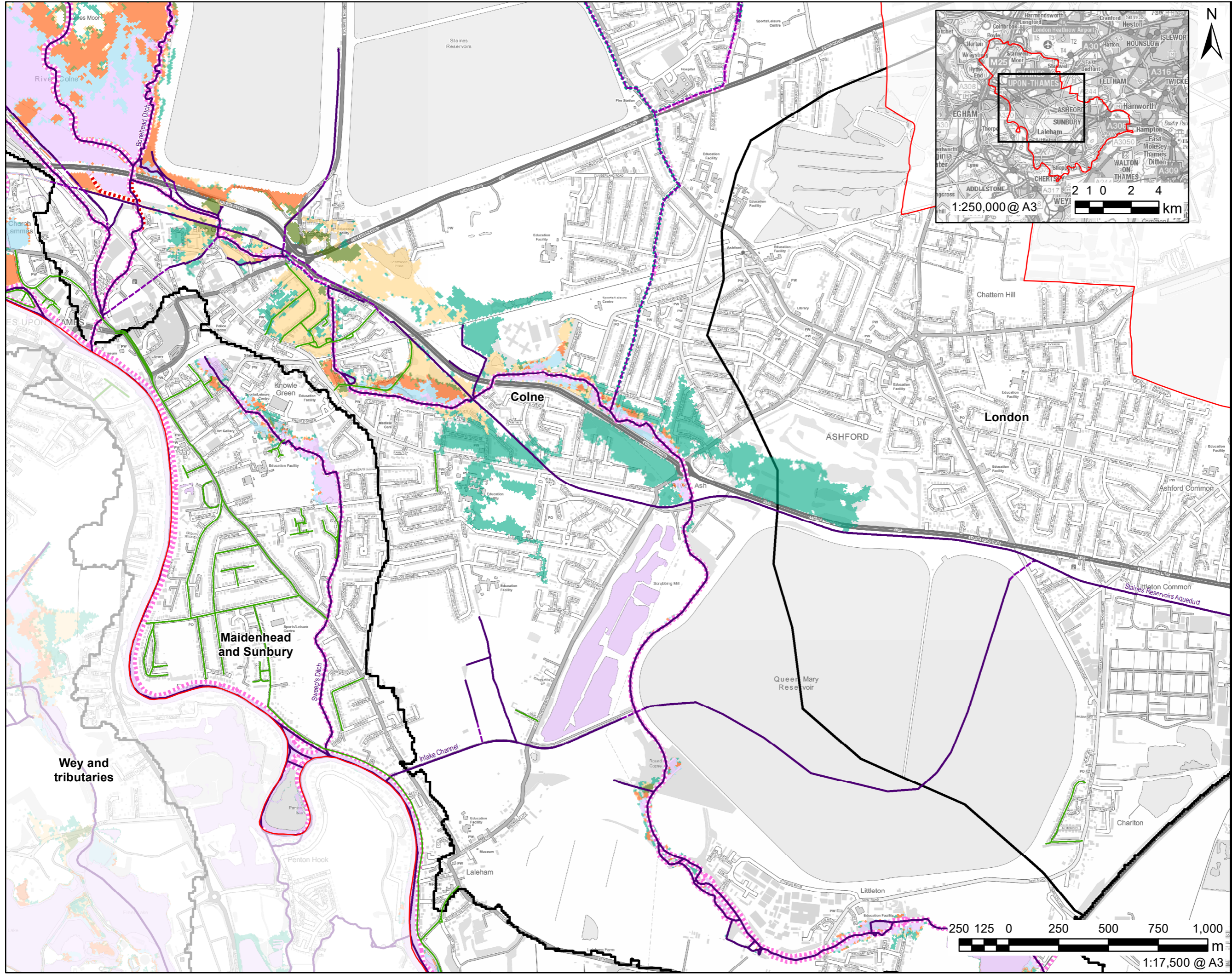
ISSUE PURPOSE
FOR INFORMATION
PROJECT NUMBER
60559796

SHEET TITLE
Thames Tributaries
Flood Outlines

SHEET NUMBER
Figure 6A



This drawing has been prepared for the use of AECOM's client. It may not be used, modified, reproduced or relied upon by third parties, except as agreed by AECOM or as required by law. AECOM accepts no responsibility, and disclaims any liability whatsoever, to any party that uses or relies on this drawing without AECOM's express written consent. Do not scale this document. All measurements must be obtained from the stated dimensions.



- LEGEND**
- Spelthorne District Boundary
 - Historic Flood Record
 - Surface Watercourse
 - Culverted Watercourse
 - Management Catchments

- Flood Defences**
- Embankment
 - High Ground
 - Simple Culvert
 - Wall

- Flood Outlines for Thames Tributaries**
- 1 in 30 Year (3.3% AEP)
 - 1 in 100 Year (1% AEP)
 - 1 in 100 Year (1%AEP) Plus 20% CC
 - 1 in 100 Year (1%AEP) Plus 25% CC
 - 1 in 100 Year (1% AEP) Plus 35% CC
 - 1 in 100 Year (1% AEP) Plus 81% CC

NOTES

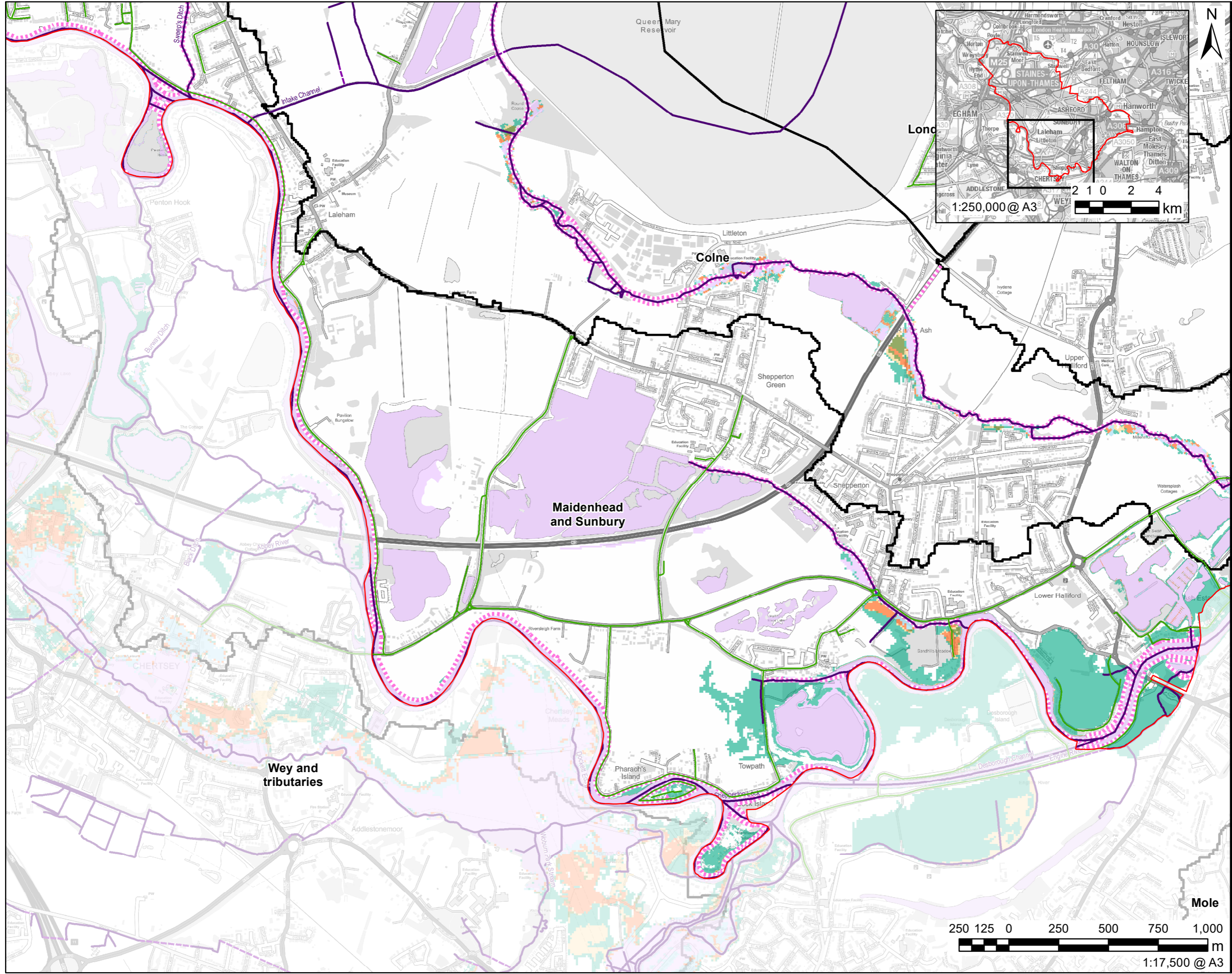
Contains Ordnance Survey Data © Crown Copyright and database right 2021. © Environment Agency copyright and/or database right 2021. All rights reserved. Some features of this map are based on digital spatial data from the Centre for Ecology & Hydrology, © NERC (CEH). © Crown copyright and database rights 2021 Ordnance Survey 100024198.

ISSUE PURPOSE
FOR INFORMATION
PROJECT NUMBER
60559796

SHEET TITLE
Thames Tributaries
Flood Outlines

SHEET NUMBER
Figure 6B

This drawing has been prepared for the use of AECOM's client. It may not be used, modified, reproduced or relied upon by third parties, except as signed by AECOM or as required by law. AECOM accepts no responsibility and disclaims any liability whatsoever, to any party that uses or relies on this drawing without AECOM's express written consent. Do not scale this document. All measurements must be obtained from the stated dimensions.



- LEGEND**
- Spelthorne District Boundary
 - Historic Flood Record
 - Surface Watercourse
 - Culverted Watercourse
 - Management Catchments
- Flood Defences**
- Embankment
 - High Ground
 - Simple Culvert
 - Wall
- Flood Outlines for Thames Tributaries**
- 1 in 30 Year (3.3% AEP)
 - 1 in 100 Year (1% AEP)
 - 1 in 100 Year (1%AEP) Plus 20% CC
 - 1 in 100 Year (1%AEP) Plus 25% CC
 - 1 in 100 Year (1% AEP) Plus 35% CC
 - 1 in 100 Year (1% AEP) Plus 81% CC

NOTES

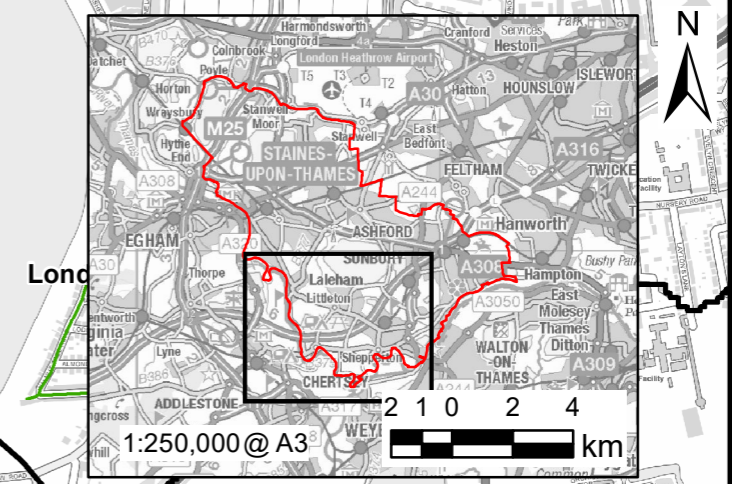
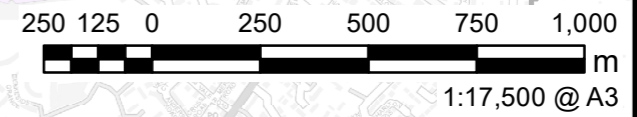
Contains Ordnance Survey Data
© Crown Copyright and database right 2021. © Environment Agency copyright and/or database right 2021. All rights reserved. Some features of this map are based on digital spatial data from the Centre for Ecology & Hydrology, © NERC (CEH). © Crown copyright and database rights 2021 Ordnance Survey 100024198.

ISSUE PURPOSE
FOR INFORMATION

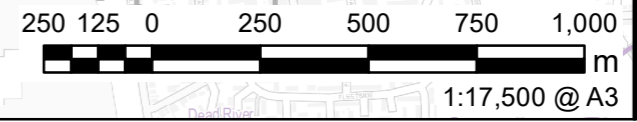
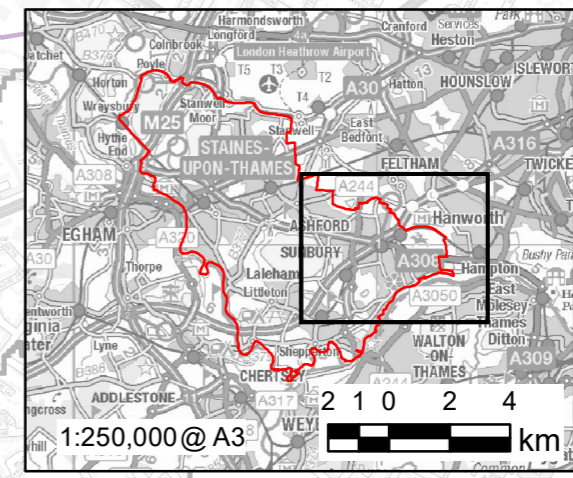
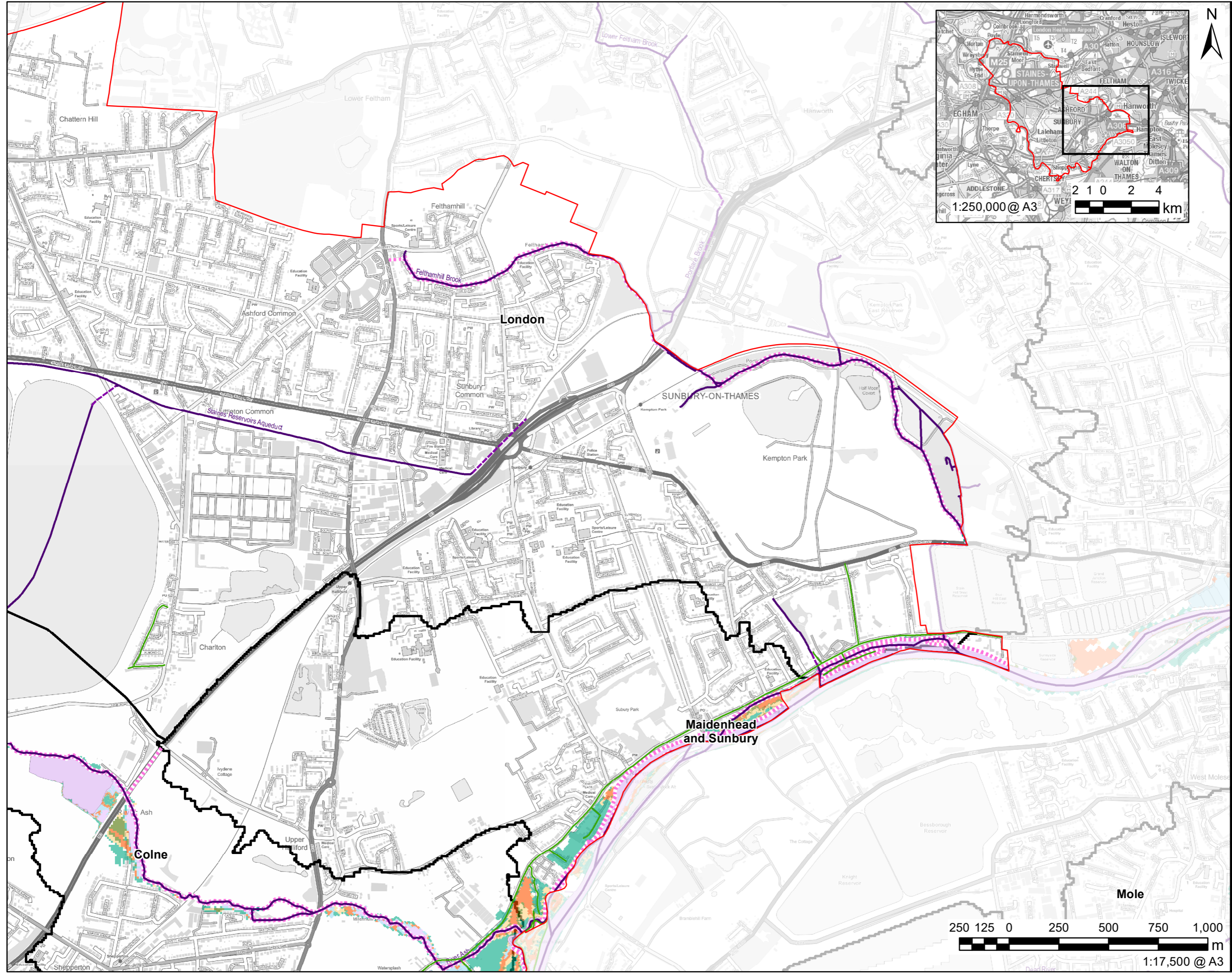
PROJECT NUMBER
60559796

SHEET TITLE
Thames Tributaries
Flood Outlines

SHEET NUMBER
Figure 6C



This drawing has been prepared for the use of AECOM's client. It may not be used, modified, reproduced or relied upon by third parties, except as signed by AECOM or as required by law. AECOM accepts no responsibility and disclaims any liability whatsoever, to any party that uses or relies on this drawing without AECOM's express written consent. Do not scale this document. All measurements must be obtained from the stated dimensions.



- LEGEND**
- Spelthorne District Boundary
 - Historic Flood Record
 - Surface Watercourse
 - Culverted Watercourse
 - Management Catchments
- Flood Defences**
- Embankment
 - High Ground
 - Simple Culvert
 - Wall
- Flood Outlines for Thames Tributaries**
- 1 in 30 Year (3.3% AEP)
 - 1 in 100 Year (1% AEP)
 - 1 in 100 Year (1%AEP) Plus 20% CC
 - 1 in 100 Year (1%AEP) Plus 25% CC
 - 1 in 100 Year (1% AEP) Plus 35% CC
 - 1 in 100 Year (1% AEP) Plus 81% CC

NOTES

Contains Ordnance Survey Data
© Crown Copyright and database right 2021. © Environment Agency copyright and/or database right 2021. All rights reserved. Some features of this map are based on digital spatial data from the Centre for Ecology & Hydrology, © NERC (CEH). © Crown copyright and database rights 2021 Ordnance Survey 100024198.

ISSUE PURPOSE
FOR INFORMATION

PROJECT NUMBER
60559796

SHEET TITLE
Thames Tributaries
Flood Outlines

SHEET NUMBER
Figure 6D