

- LEGEND**
- Spelthorne District Boundary
 - Watercourses**
 - Surface Watercourse
 - Culverted Watercourse - Working with Natural Processes (EA Dataset)**
 - Floodplain Woodland Planting Potential
 - Riparian Woodland Planting Potential
 - Wider Catchment Woodland
 - Floodplain Reconnection Potential - Runoff Attenuation Features (EA Dataset)**
 - 3.3% AEP
 - 1% AEP
 - Woodland Constraints

NOTES

Contains Ordnance Survey Data
© Crown Copyright and database right 2024. © Environment Agency copyright and/or database right 2024. All rights reserved. Some features of this map are based on digital spatial data from the Centre for Ecology & Hydrology, © NERC (CEH). © Crown copyright and database rights 2024 Ordnance Survey 100024198.

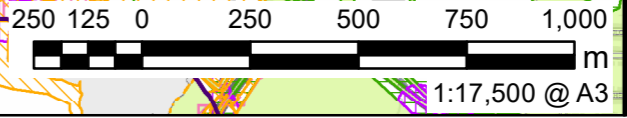
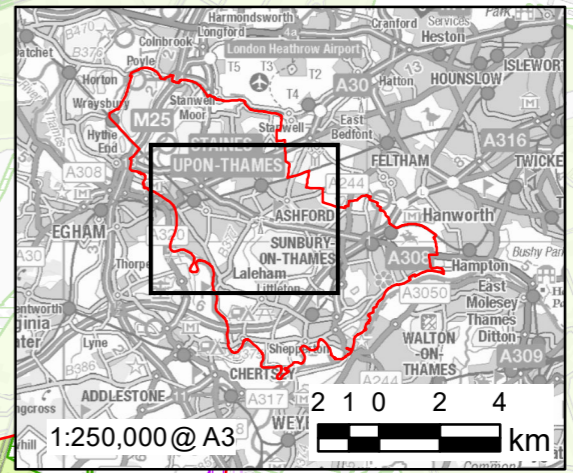
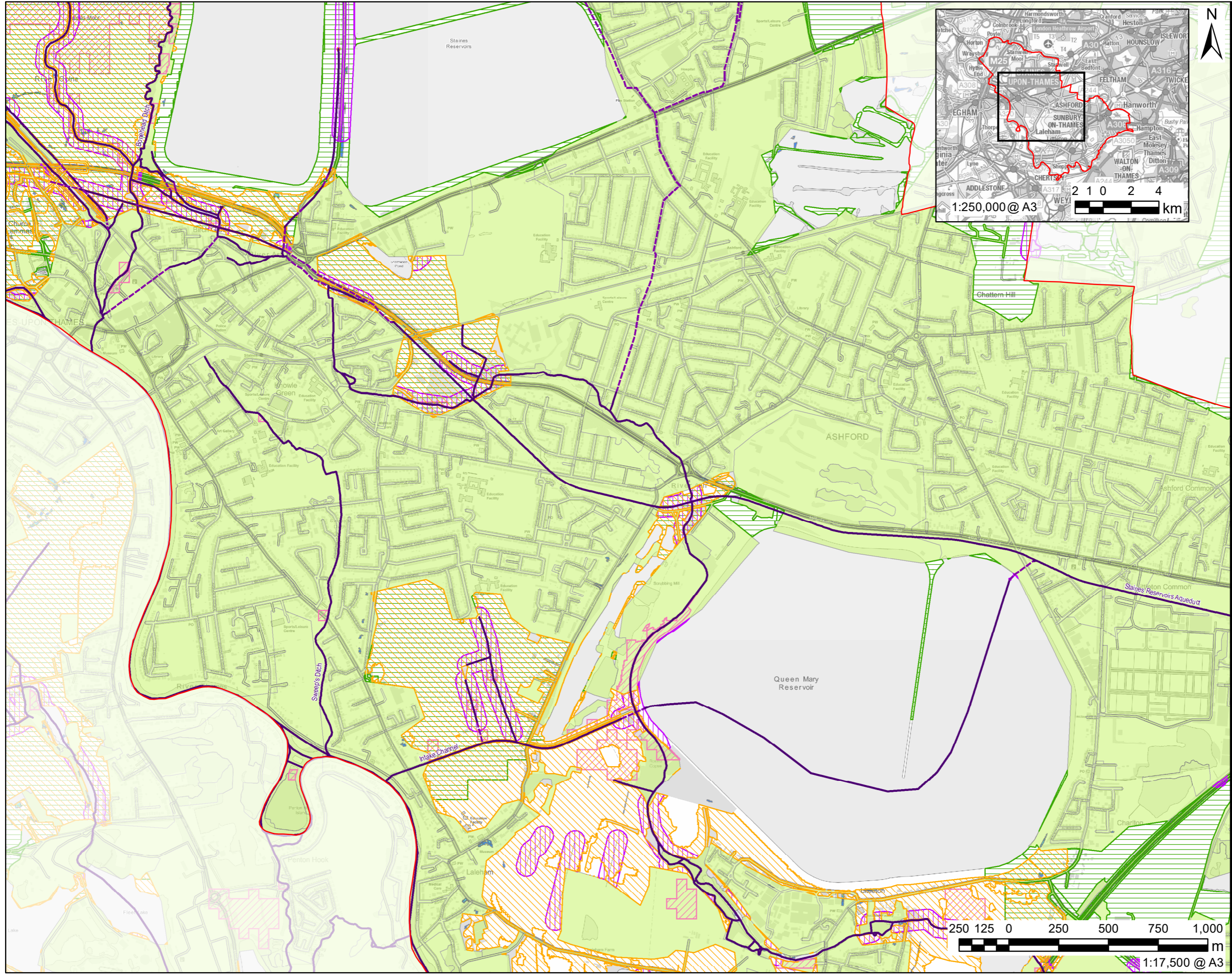
ISSUE PURPOSE
FOR INFORMATION

PROJECT NUMBER
60559796

SHEET TITLE
Working with Natural Processes

SHEET NUMBER
Figure 16A

This drawing has been prepared for the use of AECOM's client. It may not be used, modified, reproduced or relied upon by third parties, except as agreed by AECOM or as required by law. AECOM accepts no responsibility for any liability whatsoever, to any party that uses or relies on this drawing without AECOM's express written consent. Do not scale this document. All measurements must be obtained from the stated dimensions.



- LEGEND**
- Spelthorne District Boundary
 - Watercourses**
 - Surface Watercourse
 - Culverted Watercourse - Working with Natural Processes (EA Dataset)**
 - Floodplain Woodland Planting Potential
 - Riparian Woodland Planting Potential
 - Wider Catchment Woodland
 - Floodplain Reconnection Potential - Runoff Attenuation Features (EA Dataset)**
 - 3.3% AEP
 - 1% AEP
 - Woodland Constraints

NOTES

Contains Ordnance Survey Data © Crown Copyright and database right 2024. © Environment Agency copyright and/or database right 2024. All rights reserved. Some features of this map are based on digital spatial data from the Centre for Ecology & Hydrology, © NERC (CEH). © Crown copyright and database rights 2024 Ordnance Survey 100024198.

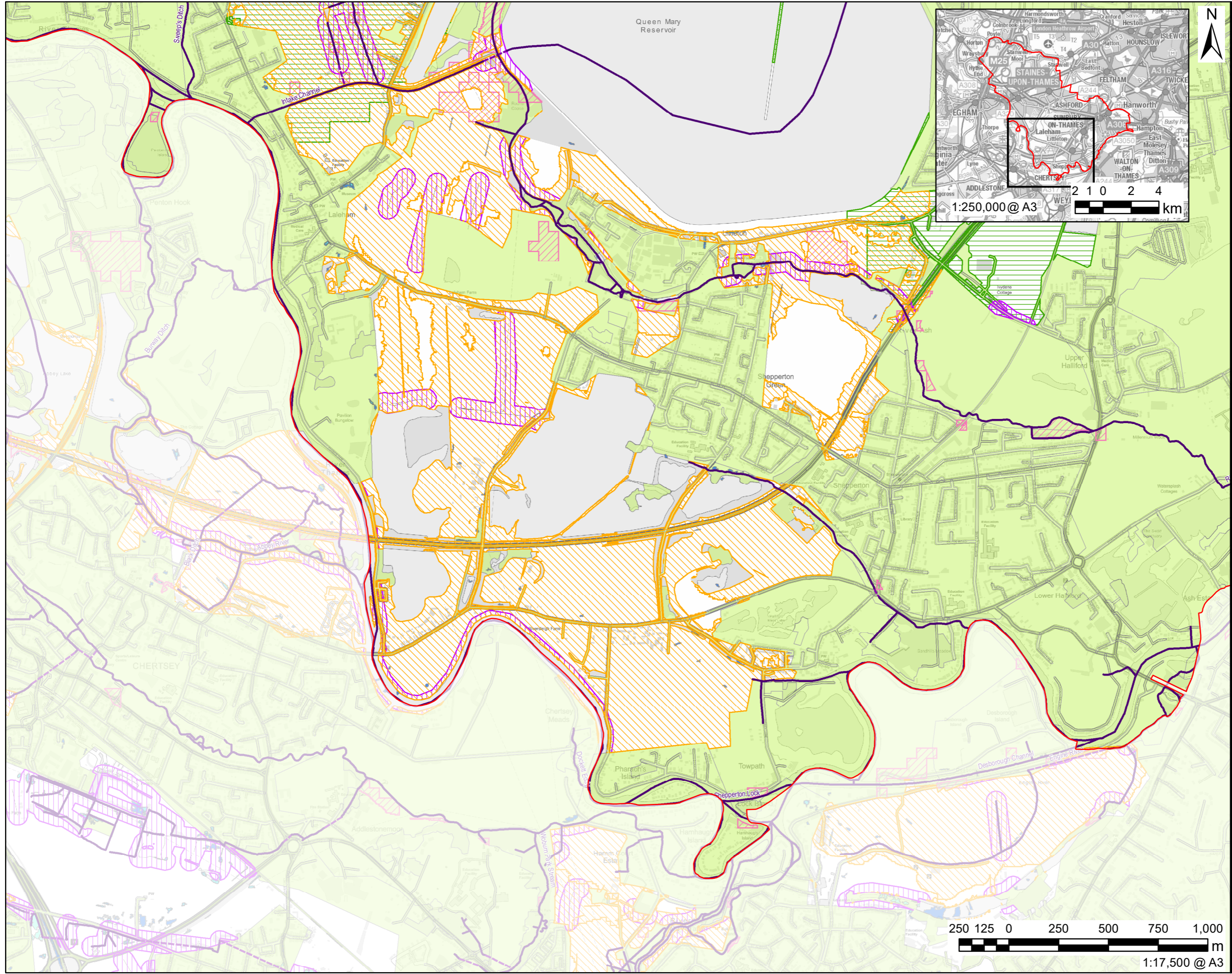
ISSUE PURPOSE
FOR INFORMATION

PROJECT NUMBER
60559796

SHEET TITLE
Working with Natural Processes

SHEET NUMBER
Figure 16B

This drawing has been prepared for the use of AECOM's client. It may not be used, modified, reproduced or relied upon by third parties, except as agreed by AECOM or as required by law. AECOM accepts no responsibility for any errors or omissions on this drawing without AECOM's express written consent. Do not scale this document. All measurements must be obtained from the stated dimensions.



- LEGEND**
- Spelthorne District Boundary
 - Watercourses**
 - Surface Watercourse
 - Culverted Watercourse - Working with Natural Processes (EA Dataset)**
 - Floodplain Woodland Planting Potential
 - Riparian Woodland Planting Potential
 - Wider Catchment Woodland
 - Floodplain Reconnection Potential - Runoff Attenuation Features (EA Dataset)**
 - 3.3% AEP
 - 1% AEP
 - Woodland Constraints

NOTES

Contains Ordnance Survey Data
© Crown Copyright and database right 2024. © Environment Agency copyright and/or database right 2024. All rights reserved. Some features of this map are based on digital spatial data from the Centre for Ecology & Hydrology, © NERC (CEH). © Crown copyright and database rights 2024 Ordnance Survey 100024198.

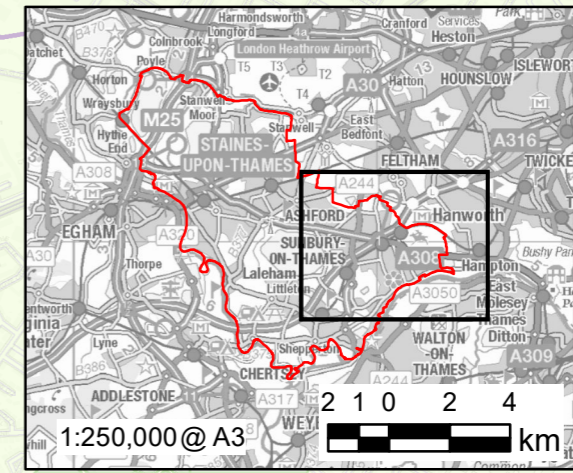
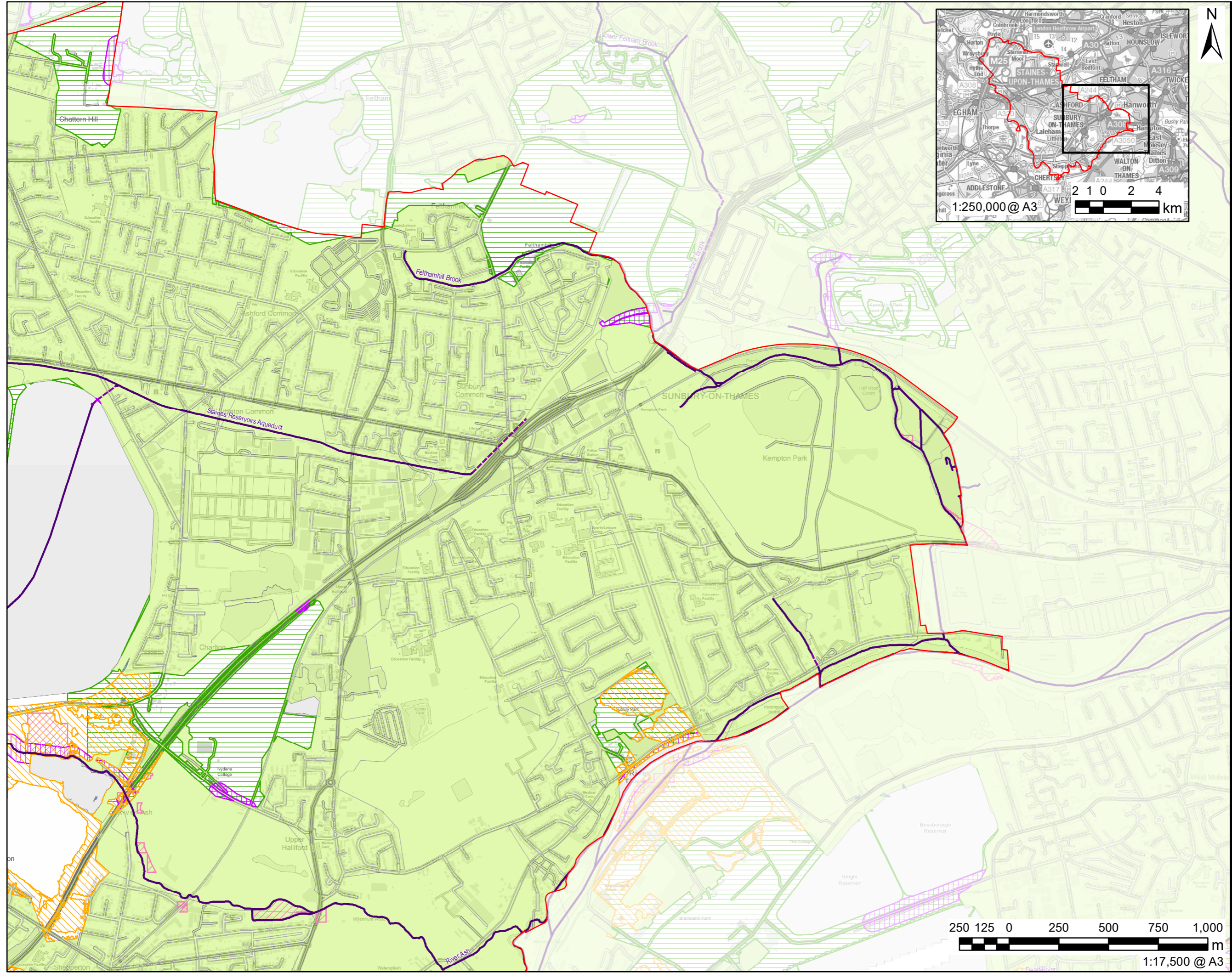
ISSUE PURPOSE
FOR INFORMATION

PROJECT NUMBER
60559796

SHEET TITLE
Working with Natural Processes

SHEET NUMBER
Figure 16C

This drawing has been prepared for the use of AECOM's client. It may not be used, modified, reproduced or relied upon by third parties, except as agreed by AECOM or as required by law. AECOM accepts no responsibility for any errors or omissions in this drawing without AECOM's express written consent. Do not scale this document. All measurements must be obtained from the stated dimensions.



NOTES

Contains Ordnance Survey Data © Crown Copyright and database right 2024. © Environment Agency copyright and/or database right 2024. All rights reserved. Some features of this map are based on digital spatial data from the Centre for Ecology & Hydrology, © NERC (CEH). © Crown copyright and database rights 2024 Ordnance Survey 100024198.

ISSUE PURPOSE

FOR INFORMATION

PROJECT NUMBER

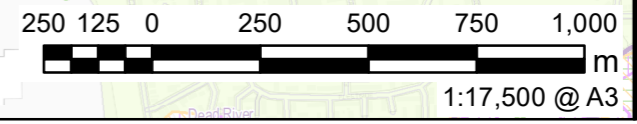
60559796

SHEET TITLE

Working with Natural Processes

SHEET NUMBER

Figure 16D



This drawing has been prepared for the use of AECOM's client. It may not be used, modified, reproduced or relied upon by third parties, except as agreed by AECOM or as required by law. AECOM accepts no responsibility for any liability whatsoever, to any party that uses or relies on this drawing without AECOM's express written consent. Do not scale this document. All measurements must be obtained from the stated dimensions.