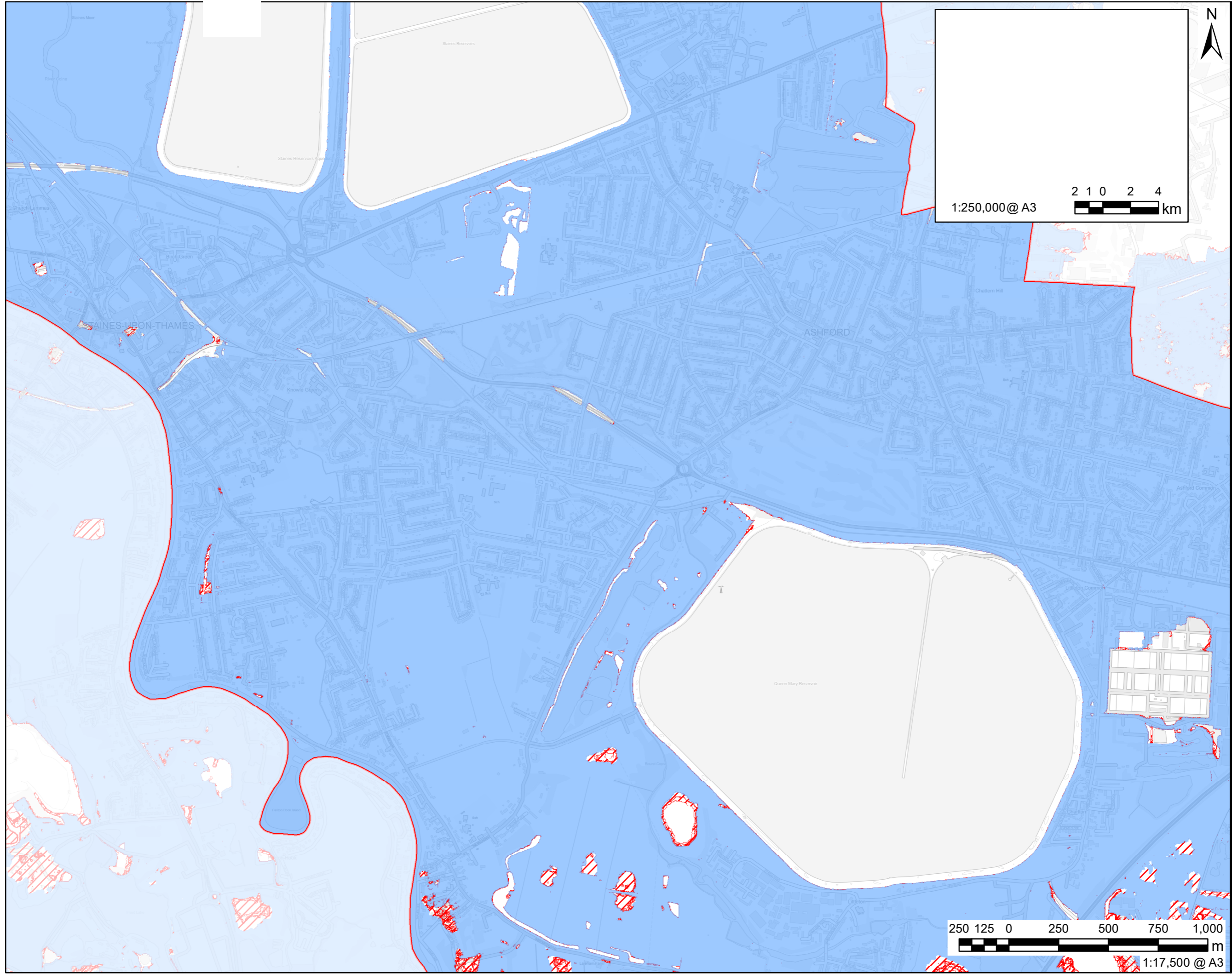


This drawing has been prepared for the use of AECOM's client. It may not be used, modified, reproduced or relied upon by third parties, except as agreed by AECOM or as required by law. AECOM accepts no responsibility and disclaims any liability whatsoever, to any party that uses or relies on this drawing without AECOM's express written consent. Do not scale this document. All measurements must be obtained from the stated dimensions.



1:250,000@ A3

2 1 0 2 4 km



AECOM

PROJECT
Spelthorne SFRA

CLIENT
Spelthorne Borough Council

CONSULTANT
AECOM Limited
Midpoint
Alencon Link
Basingstoke, RG21 7PP
T: +44-(0)20-7061-7000
www.aecom.com

LEGEND

- Spelthorne District
- Maximum extent of flooding from reservoirs:**
 - when river levels are normal
 - when there is also flooding from rivers

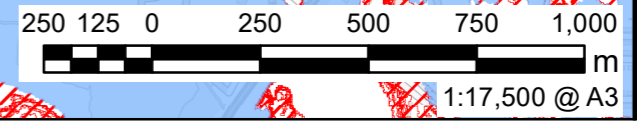
NOTES

Contains Ordnance Survey Data
© Crown Copyright and database right 2024. © Environment Agency copyright and/or database right 2024. All rights reserved. Some features of this map are based on digital spatial data from the Centre for Ecology & Hydrology, © NERC (CEH). © Crown copyright and database rights 2024 Ordnance Survey 100024198.

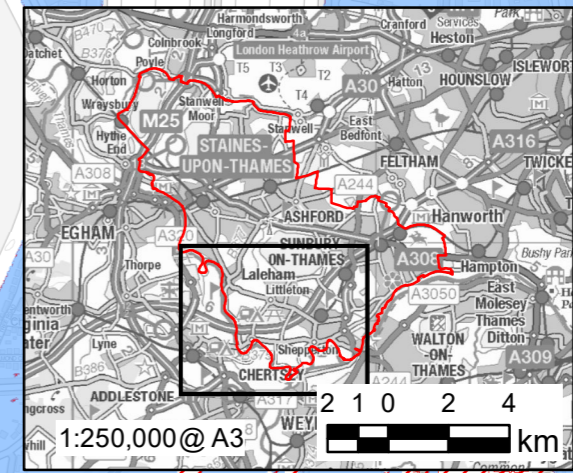
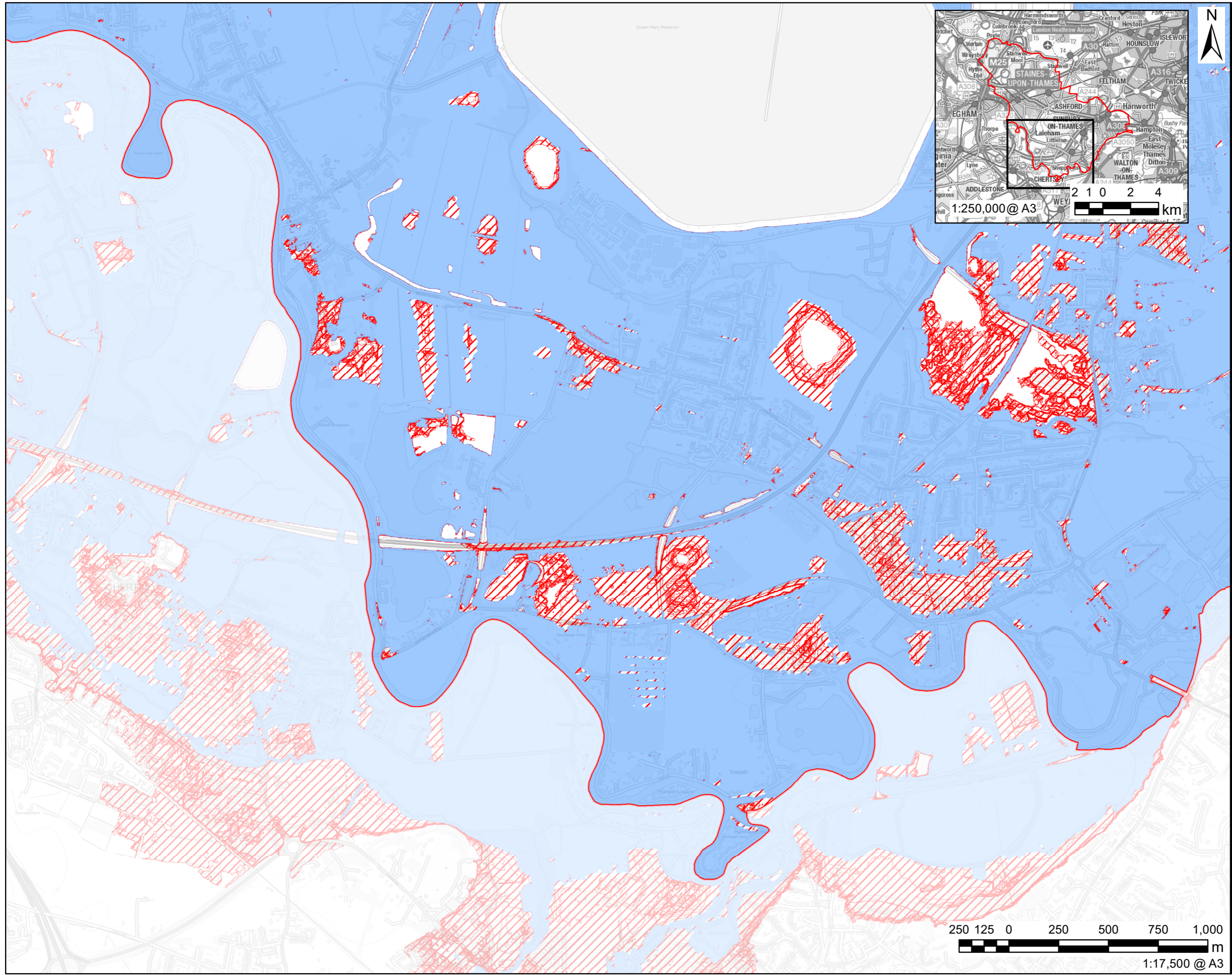
ISSUE PURPOSE
FOR INFORMATION
PROJECT NUMBER

60559796
SHEET TITLE
Risk of Flooding from Artificial Sources

SHEET NUMBER
Figure 14B



This drawing has been prepared for the use of AECOM's client. It may not be used, modified, reproduced or relied upon by third parties, except as agreed by AECOM or as required by law. AECOM accepts no responsibility and disclaims any liability whatsoever, to any party that uses or relies on this drawing without AECOM's express written consent. Do not scale this document. All measurements must be obtained from the stated dimensions.



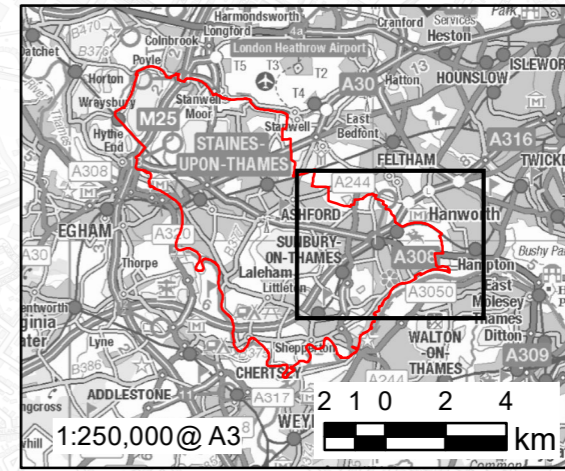
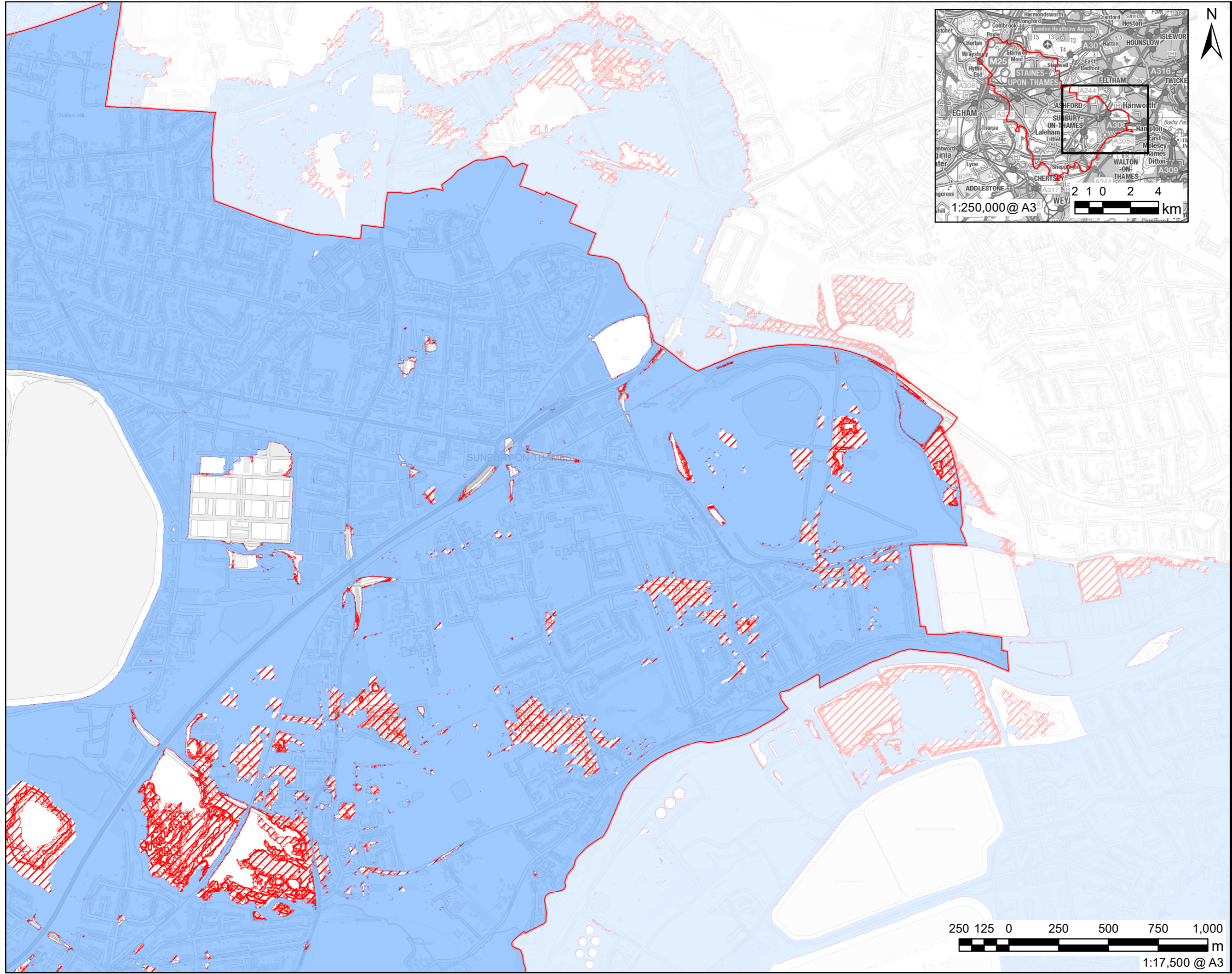
LEGEND

- Spelthome District
- Maximum extent of flooding from reservoirs:**
 - when river levels are normal
 - when there is also flooding from rivers




NOTES
Contains Ordnance Survey Data
© Crown Copyright and database right 2024. © Environment Agency copyright and/or database right 2024. All rights reserved. Some features of this map are based on digital spatial data from the Centre for Ecology & Hydrology, © NERC (CEH). © Crown copyright and database rights 2024 Ordnance Survey 100024198.

ISSUE PURPOSE
FOR INFORMATION
PROJECT NUMBER
60559796
SHEET TITLE
Risk of Flooding from Artificial Sources
SHEET NUMBER
Figure 14C

This drawing has been prepared for the use of AECOM's client. It may not be used, modified, reproduced or relied upon by third parties, except as agreed by AECOM or as required by law. AECOM accepts no responsibility, and denies any liability whatsoever, to any party that uses or relies on this drawing without AECOM's express written consent. Do not scale this document. All measurements must be obtained from the stated dimensions.

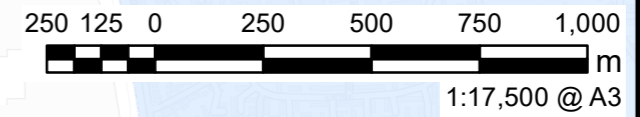


LEGEND

	Spelthorne District
Maximum extent of flooding from reservoirs:	
	when river levels are normal
	when there is also flooding from rivers

NOTES
Contains Ordnance Survey Data
© Crown Copyright and database right 2024. © Environment Agency copyright and/or database right 2024. All rights reserved. Some features of this map are based on digital spatial data from the Centre for Ecology & Hydrology, © NERC (CEH). © Crown copyright and database rights 2024 Ordnance Survey 100024198.

ISSUE PURPOSE
FOR INFORMATION
PROJECT NUMBER
60559796
SHEET TITLE
Risk of Flooding from Artificial Sources
SHEET NUMBER
Figure 14D



This drawing has been prepared for the use of AECOM's client. It may not be used, modified, reproduced or relied upon by third parties, except as agreed by AECOM or as required by law. AECOM accepts no responsibility and disclaims any liability whatsoever, to any party that uses or relies on this drawing without AECOM's express written consent. Do not scale this document. All measurements must be obtained from the stated dimensions.