

# AECOM

**PROJECT**  
 Spelthorne SFRA

**CLIENT**  
 Spelthorne Borough Council

**CONSULTANT**  
 AECOM Limited  
 Midpoint  
 Alencon Link  
 Basingstoke, RG21 7PP  
 T: +44-(0)20-7061-7000  
 www.aecom.com

- LEGEND**
- Spelthorne District Boundary
  - Historic Flood Record
  - Surface Watercourse
  - Culverted Watercourse
  - Embankment
  - High Ground
  - Simple Culvert
  - Wall

**Flood Defences**

- Embankment
- High Ground
- Simple Culvert
- Wall

**Flood Depth 1% AEP 35 CC allowance, River Thames 2023 (Datchet to Teddington) (Thames Dominated)**

Depth (m)	Color
0 - 0.5	Lightest Blue
0.5 - 1	Light Blue
1 - 1.5	Medium-Light Blue
1.5 - 2	Medium Blue
2 - 2.5	Dark Blue
2.5 - 3	Very Dark Blue
3 - 4	Purple
4 - 5	Dark Purple
>5	Red

**NOTES**

Contains Ordnance Survey Data  
 © Crown Copyright and database right 2024. © Environment Agency copyright and/or database right 2024. All rights reserved. Some features of this map are based on digital spatial data from the Centre for Ecology & Hydrology, © NERC (CEH), © Crown copyright and database rights 2024 Ordnance Survey 100024198.

**ISSUE PURPOSE**

FOR INFORMATION

**PROJECT NUMBER**

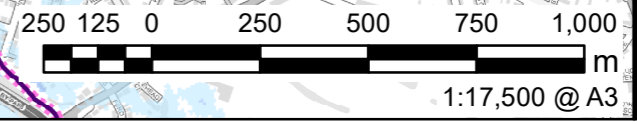
60559796

**SHEET TITLE**

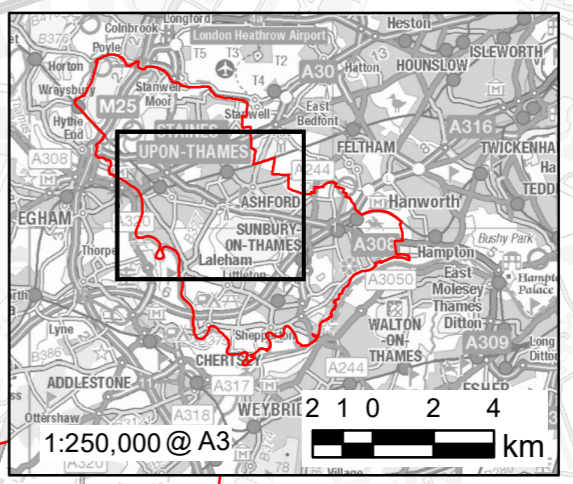
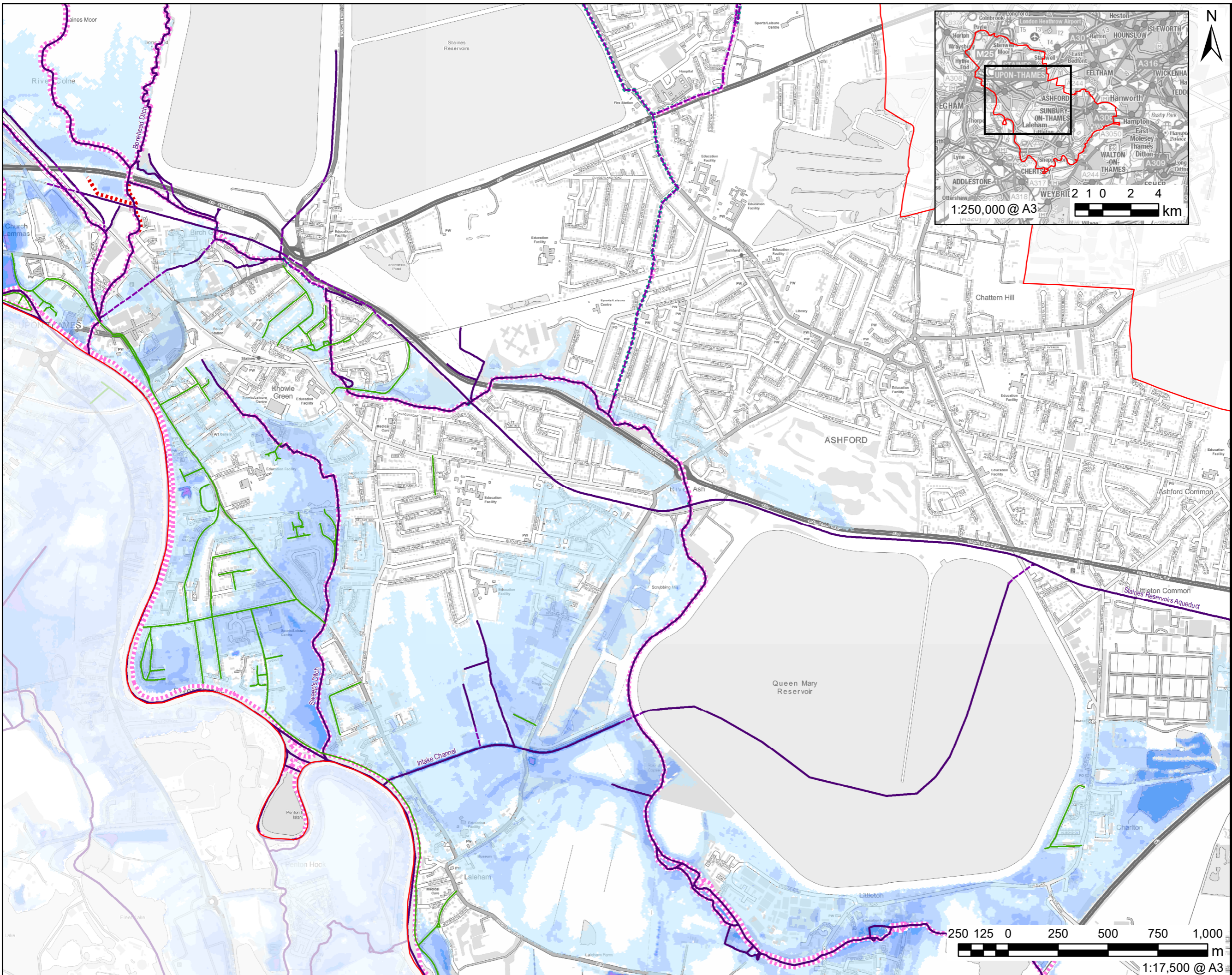
River Thames (Thames Dominated) Depth – 1% AEP 35% climate change allowance

**SHEET NUMBER**

Figure 1A



This drawing has been prepared for the use of AECOM's client. It may not be used, modified, reproduced or relied upon by third parties, except as agreed by AECOM or as required by law. AECOM accepts no responsibility and disclaims any liability whatsoever to any party that uses or relies on this drawing without AECOM's express written consent. Do not scale this document. All measurements must be obtained from the stated dimensions.



# AECOM

**PROJECT**  
Speltthorne SFRA

**CLIENT**  
Speltthorne Borough Council

**CONSULTANT**  
AECOM Limited  
Midpoint  
Alencon Link  
Basingstoke, RG21 7PP  
T: +44-(0)20-7061-7000  
www.aecom.com

- LEGEND**
- Speltthorne District Boundary
  - Historic Flood Record
  - Surface Watercourse
  - Culverted Watercourse
- Flood Defences**
- Embankment
  - High Ground
  - Simple Culvert
  - Wall

**Flood Depth 1% AEP 35 CC allowance, River Thames 2023 (Datchet to Teddington) (Thames Dominated)**

- Depth (m)**
- 0 - 0.5
  - 0.5 - 1
  - 1 - 1.5
  - 1.5 - 2
  - 2 - 2.5
  - 2.5 - 3
  - 3 - 4
  - 4 - 5
  - >5

**NOTES**

Contains Ordnance Survey Data  
 © Crown Copyright and database right 2024. © Environment Agency copyright and/or database right 2024. All rights reserved. Some features of this map are based on digital spatial data from the Centre for Ecology & Hydrology, © NERC (CEH), © Crown copyright and database rights 2024 Ordnance Survey 100024198.

**ISSUE PURPOSE**  
FOR INFORMATION

**PROJECT NUMBER**

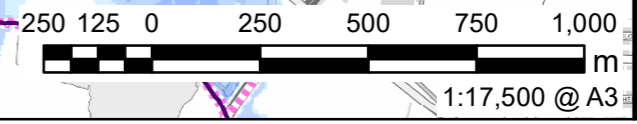
60559796

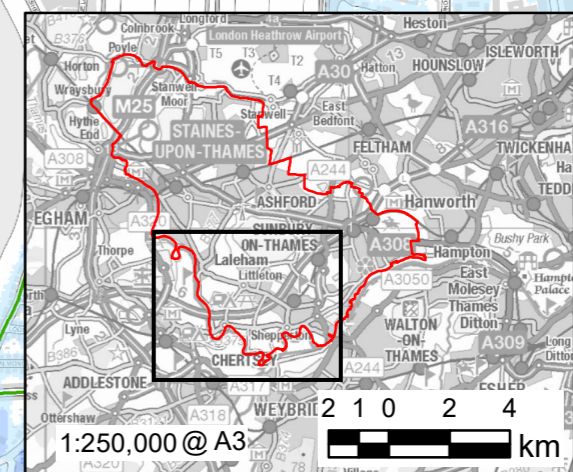
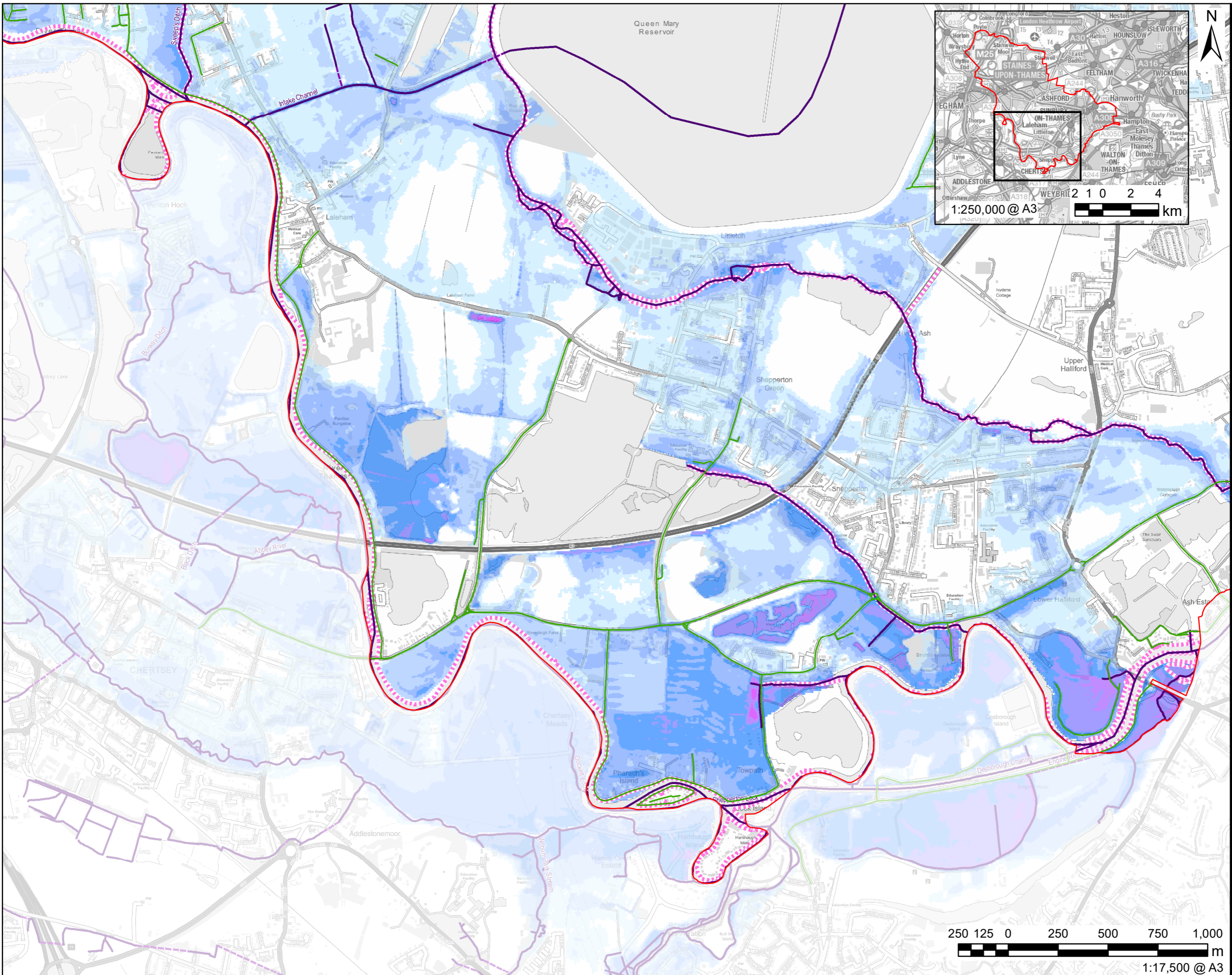
**SHEET TITLE**

River Thames (Thames Dominated) Depth – 1% AEP 35% climate change allowance

**SHEET NUMBER**

Figure 1B





- LEGEND**
- Speltorne District Boundary
  - Historic Flood Record
  - Surface Watercourse
  - Culverted Watercourse
  - Embankment
  - High Ground
  - Simple Culvert
  - Wall

**Flood Depth 1% AEP 35 CC allowance, River Thames 2023 (Datchet to Teddington) (Thames Dominated)**

- Depth (m)
- 0 - 0.5
  - 0.5 - 1
  - 1 - 1.5
  - 1.5 - 2
  - 2 - 2.5
  - 2.5 - 3
  - 3 - 4
  - 4 - 5
  - >5

**NOTES**

Contains Ordnance Survey Data  
 © Crown Copyright and database right 2024. © Environment Agency copyright and/or database right 2024. All rights reserved. Some features of this map are based on digital spatial data from the Centre for Ecology & Hydrology, © NERC (CEH). © Crown copyright and database rights 2024 Ordnance Survey 100024198.

**ISSUE PURPOSE**

FOR INFORMATION

**PROJECT NUMBER**

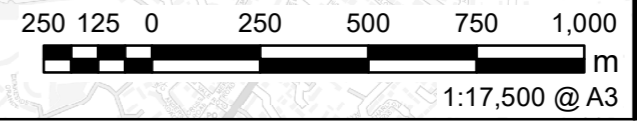
60559796

**SHEET TITLE**

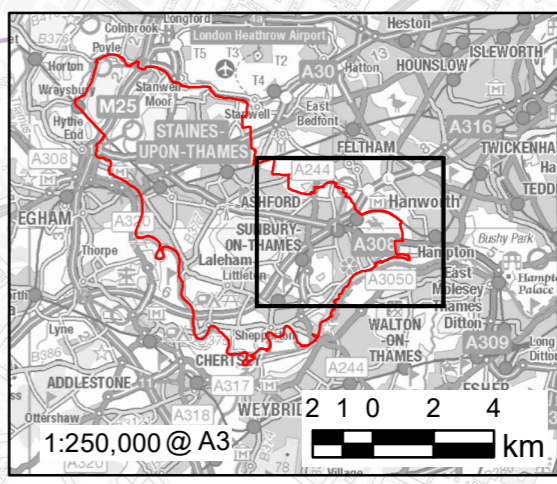
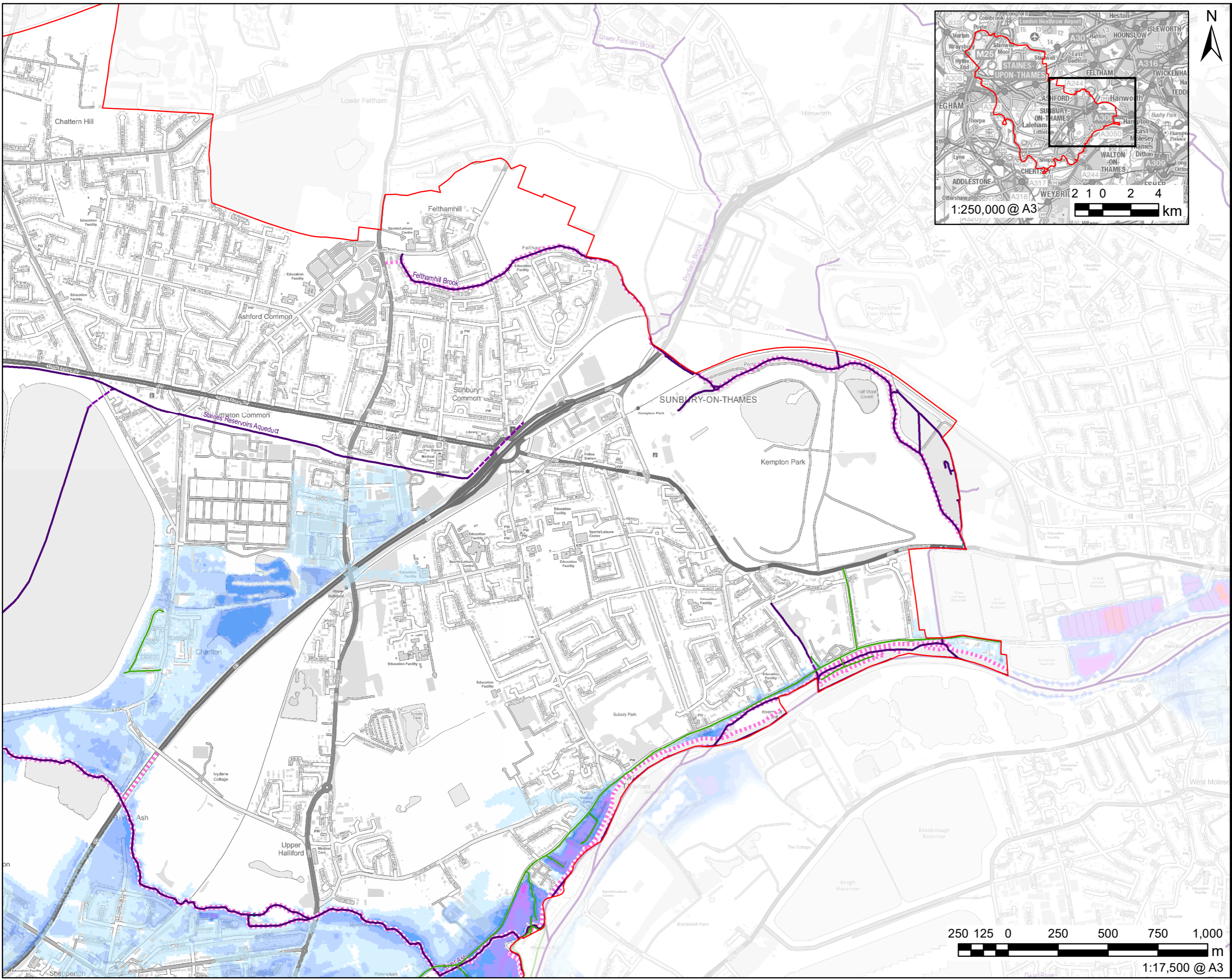
River Thames (Thames Dominated) Depth – 1% AEP 35% climate change allowance

**SHEET NUMBER**

Figure 1C



This drawing has been prepared for the use of AECOM's client. It may not be used, modified, reproduced or relied upon by any party that uses or relies on this drawing without AECOM's express written consent. Do not scale this document. All measurements must be obtained from the stated dimensions.



# AECOM

**PROJECT**  
Speltorne SFRA

**CLIENT**  
Speltorne Borough Council

**CONSULTANT**  
AECOM Limited  
Midpoint  
Alencon Link  
Basingstoke, RG21 7PP  
T: +44-(0)20-7061-7000  
www.aecom.com

**LEGEND**

- Speltorne District Boundary
- Historic Flood Record
- Surface Watercourse
- Culverted Watercourse

**Flood Defences**

- Embankment
- High Ground
- Simple Culvert
- Wall

**Flood Depth 1% AEP 35 CC allowance, River Thames 2023 (Datchet to Teddington) (Thames Dominated)**

Depth (m)

- 0 - 0.5
- 0.5 - 1
- 1 - 1.5
- 1.5 - 2
- 2 - 2.5
- 2.5 - 3
- 3 - 4
- 4 - 5
- >5

**NOTES**

Contains Ordnance Survey Data  
 © Crown Copyright and database right 2024. © Environment Agency copyright and/or database right 2024. All rights reserved. Some features of this map are based on digital spatial data from the Centre for Ecology & Hydrology, © NERC (CEH), © Crown copyright and database rights 2024 Ordnance Survey 100024198.

**ISSUE PURPOSE**

FOR INFORMATION

**PROJECT NUMBER**

60559796

**SHEET TITLE**

River Thames (Thames Dominated) Depth – 1% AEP 35% climate change allowance

**SHEET NUMBER**

Figure 1D

