

AECOM

PROJECT
Spelthorne SFRA

CLIENT
Spelthorne Borough Council

CONSULTANT
AECOM Limited
Midpoint
Alencon Link
Basingstoke, RG21 7PP
T: +44-(0)20-7061-7000
www.aecom.com

- LEGEND**
- Spelthorne District Boundary
 - Historic Flood Record
 - Surface Watercourse
 - Culverted Watercourse
- Flood Defences**
- Embankment
 - High Ground
 - Simple Culvert
 - Wall
- Flood Outlines for Thames Tributaries**
- 1 in 30 Year (5% AEP)
 - 1 in 100 Year (1% AEP)
 - 1 in 100 Year (1% AEP) Plus 35% CC
 - 1 in 100 Year (1% AEP) Plus 70% CC

NOTES

Contains Ordnance Survey Data
© Crown Copyright and database right 2021. © Environment Agency copyright and/or database right 2021. All rights reserved. Some features of this map are based on digital spatial data from the Centre for Ecology & Hydrology, © NERC (CEH). © Crown copyright and database rights 2021 Ordnance Survey 100024198.

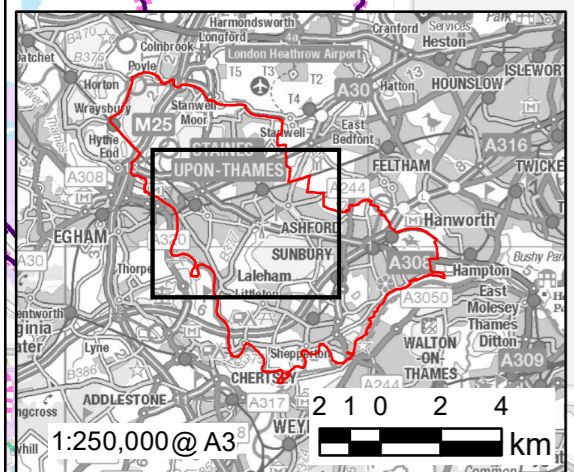
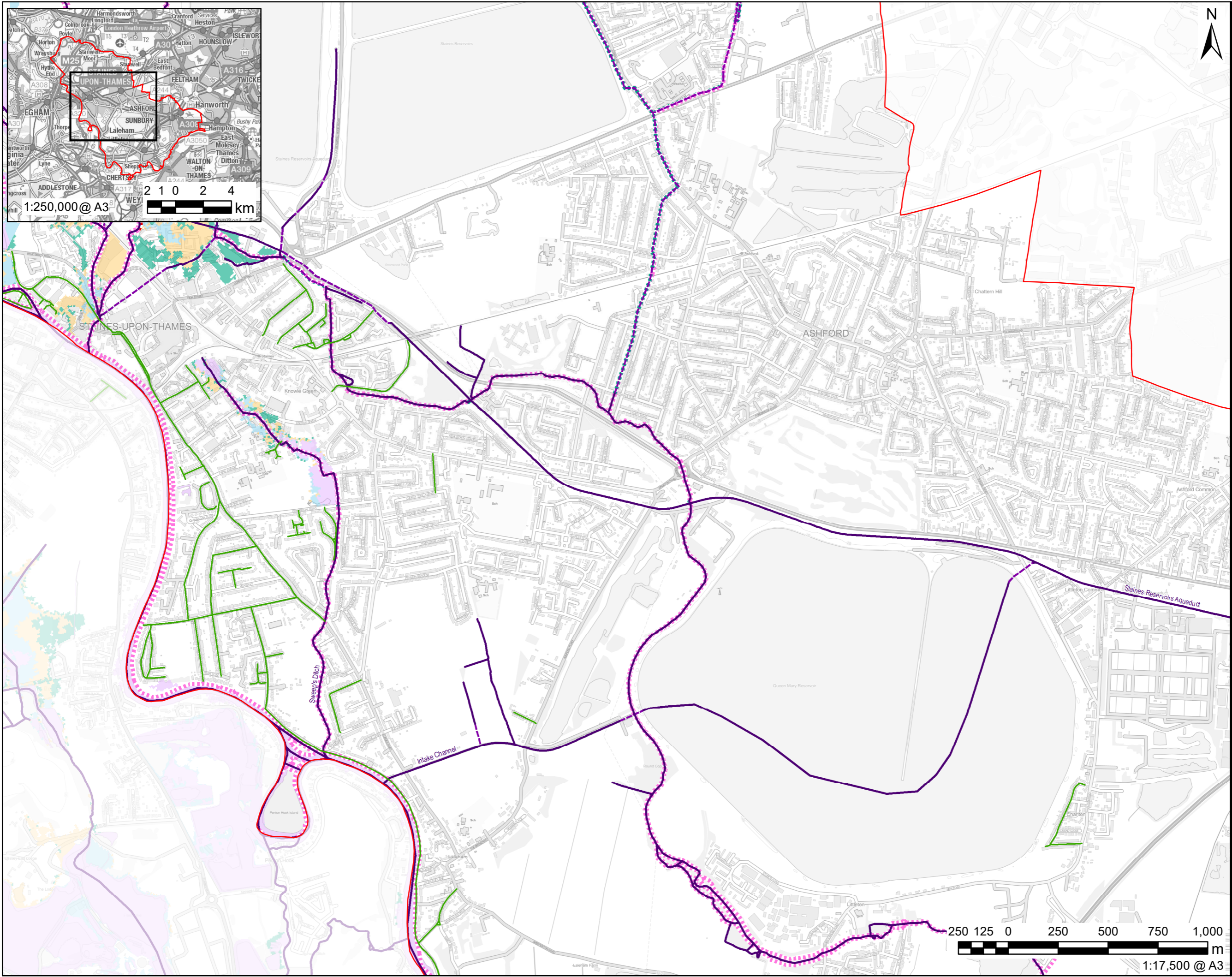
ISSUE PURPOSE
FOR INFORMATION

PROJECT NUMBER
60559796

SHEET TITLE
Thames Tributaries
Flood Outlines

SHEET NUMBER
Figure 6A

This drawing has been prepared for the use of AECOM's client. It may not be used, modified, reproduced or relied upon by third parties, except as signed by AECOM or as required by law. AECOM accepts no responsibility, and disclaims any liability whatsoever, to any party that uses or relies on this drawing without AECOM's express written consent. Do not scale this document. All measurements must be obtained from the stated dimensions.



AECOM

PROJECT
Speltorne SFRA

CLIENT
Speltorne Borough Council

CONSULTANT
AECOM Limited
Midpoint
Alencon Link
Basingstoke, RG21 7PP
T: +44-(0)20-7061-7000
www.aecom.com

- LEGEND**
- Speltorne District Boundary
 - Historic Flood Record
 - Surface Watercourse
 - Culverted Watercourse
- Flood Defences**
- Embankment
 - High Ground
 - Simple Culvert
 - Wall
- Flood Outlines for Thames Tributaries**
- 1 in 30 Year (5% AEP)
 - 1 in 100 Year (1% AEP)
 - 1 in 100 Year (1% AEP) Plus 35% CC
 - 1 in 100 Year (1% AEP) Plus 70% CC

NOTES

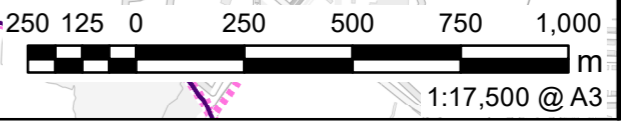
Contains Ordnance Survey Data © Crown Copyright and database right 2021. © Environment Agency copyright and/or database right 2021. All rights reserved. Some features of this map are based on digital spatial data from the Centre for Ecology & Hydrology, © NERC (CEH). © Crown copyright and database rights 2021 Ordnance Survey 100024198.

ISSUE PURPOSE
FOR INFORMATION

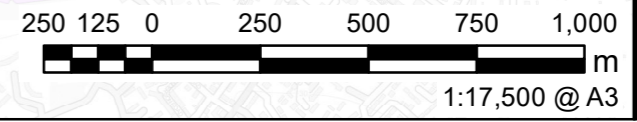
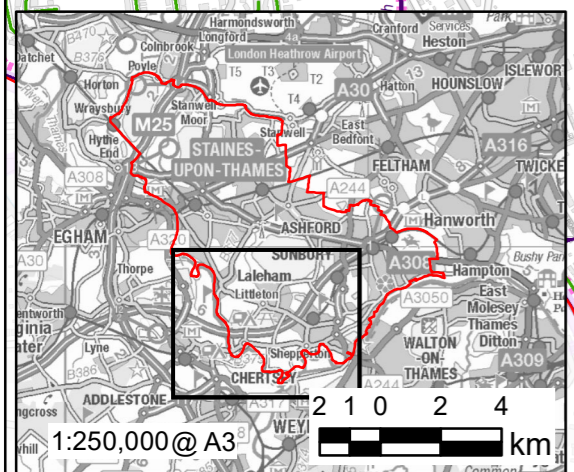
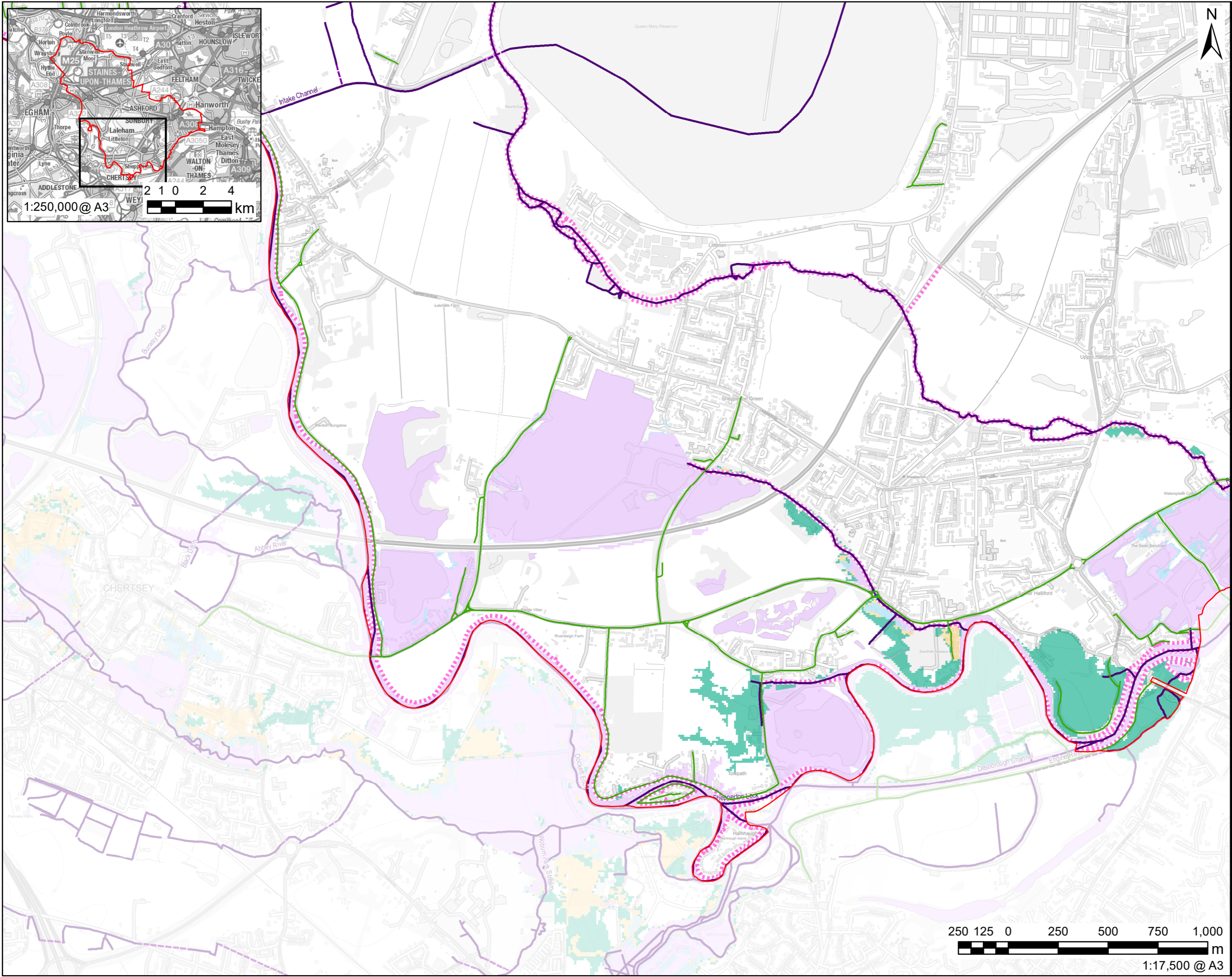
PROJECT NUMBER
60559796

SHEET TITLE
Thames Tributaries
Flood Outlines

SHEET NUMBER
Figure 6B



This drawing has been prepared for the use of AECOM's client. It may not be used, modified, reproduced or relied upon by third parties, except as signed by AECOM or as required by law. AECOM accepts no responsibility and disclaims any liability whatsoever, to any party that uses or relies on this drawing without AECOM's express written consent. Do not scale this document. All measurements must be obtained from the stated dimensions.



LEGEND

- Spelthorne District Boundary
- Historic Flood Record
- Surface Watercourse
- Culverted Watercourse

Flood Defences

- Embankment
- High Ground
- Simple Culvert
- Wall

Flood Outlines for Thames Tributaries

- 1 in 30 Year (5% AEP)
- 1 in 100 Year (1% AEP)
- 1 in 100 Year (1% AEP) Plus 35% CC
- 1 in 100 Year (1% AEP) Plus 70% CC

NOTES

Contains Ordnance Survey Data
© Crown Copyright and database right 2021. © Environment Agency copyright and/or database right 2021. All rights reserved. Some features of this map are based on digital spatial data from the Centre for Ecology & Hydrology, © NERC (CEH). © Crown copyright and database rights 2021 Ordnance Survey 100024198.

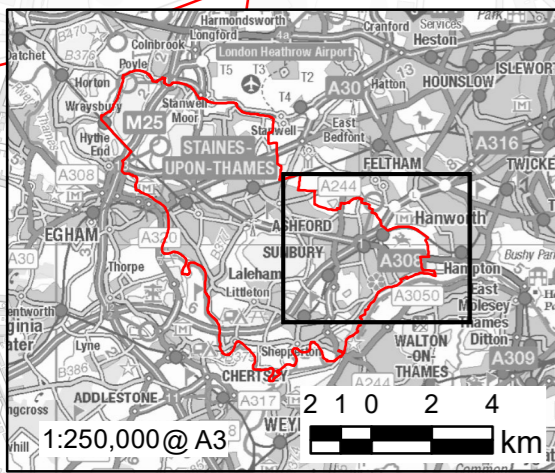
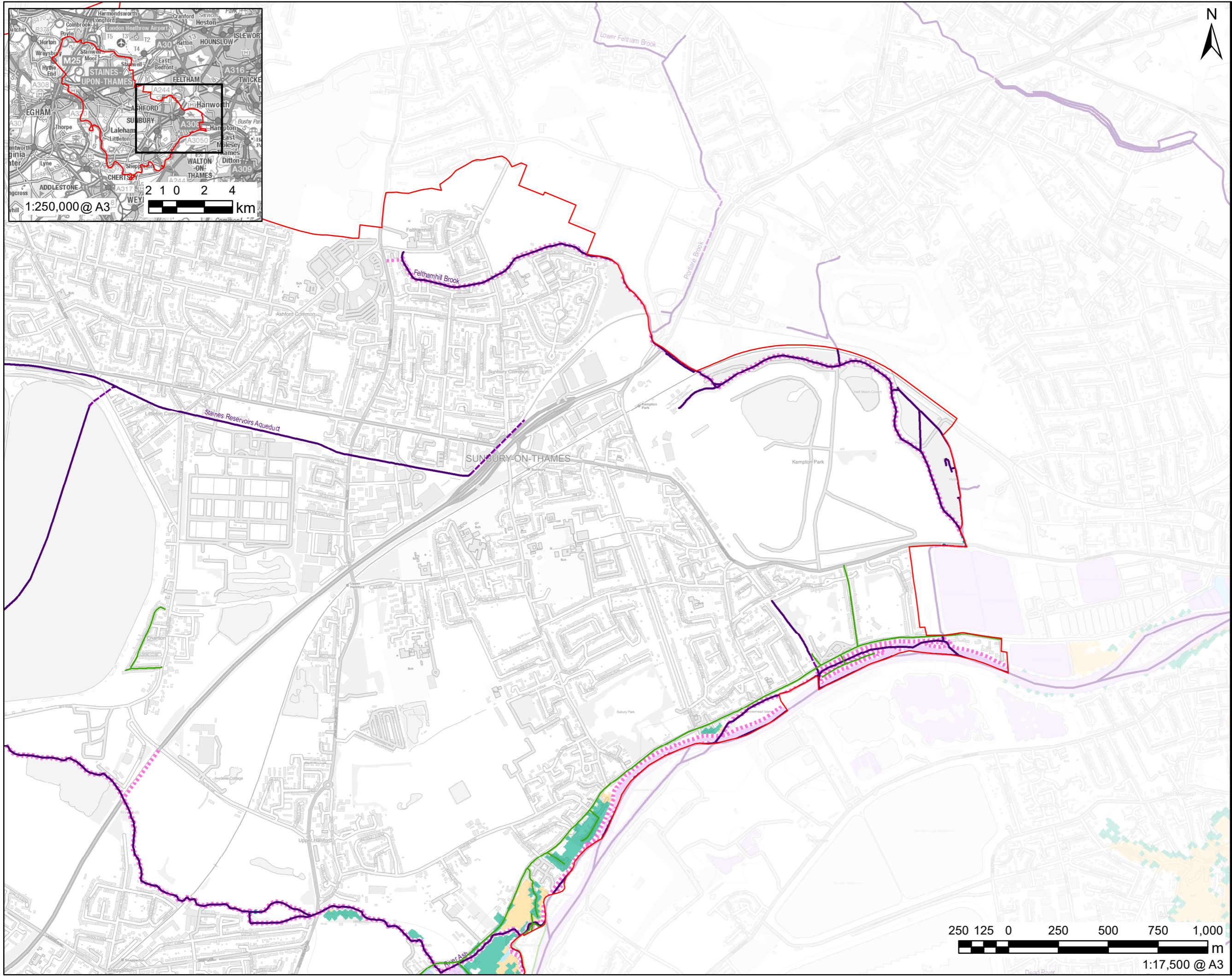
ISSUE PURPOSE
FOR INFORMATION

PROJECT NUMBER
60559796

SHEET TITLE
Thames Tributaries
Flood Outlines

SHEET NUMBER
Figure 6C

This drawing has been prepared for the use of AECOM's client. It may not be used, modified, reproduced or relied upon by third parties, except as agreed by AECOM or as required by law. AECOM accepts no responsibility, and disclaims any liability whatsoever, to any party that uses or relies on this drawing without AECOM's express written consent. Do not scale this document. All measurements must be obtained from the stated dimensions.



- LEGEND**
- Spelthorne District Boundary
 - Historic Flood Record
 - Surface Watercourse
 - Culverted Watercourse
- Flood Defences**
- Embankment
 - High Ground
 - Simple Culvert
 - Wall
- Flood Outlines for Thames Tributaries**
- 1 in 30 Year (5% AEP)
 - 1 in 100 Year (1% AEP)
 - 1 in 100 Year (1% AEP) Plus 35% CC
 - 1 in 100 Year (1% AEP) Plus 70% CC

NOTES

Contains Ordnance Survey Data
© Crown Copyright and database right 2021. © Environment Agency copyright and/or database right 2021. All rights reserved. Some features of this map are based on digital spatial data from the Centre for Ecology & Hydrology, © NERC (CEH). © Crown copyright and database rights 2021 Ordnance Survey 100024198.

ISSUE PURPOSE

FOR INFORMATION

PROJECT NUMBER

60559796

SHEET TITLE

Thames Tributaries
Flood Outlines

SHEET NUMBER

Figure 6D



This drawing has been prepared for the use of AECOM's client. It may not be used, modified, reproduced or relied upon by third parties, except as signed by AECOM or as required by law. AECOM accepts no responsibility, and disclaims any liability whatsoever, to any party that uses or relies on this drawing without AECOM's express written consent. Do not scale this document. All measurements must be obtained from the stated dimensions.