

**LEGEND**

- Speltorne District Boundary
- Historic Flood Record
- Surface Watercourse
- Culverted Watercourse

**Flood Defences**

- Embankment
- High Ground
- Simple Culvert
- Wall

**Risk of Flooding from Surface Water**

- 3.3% AEP (High Probability)
- 1% AEP (Medium Probability)
- 0.1% AEP (Low Probability)

**NOTES**

Contains Ordnance Survey Data  
© Crown Copyright and database right 2021. © Environment Agency copyright and/or database right 2021. All rights reserved. Some features of this map are based on digital spatial data from the Centre for Ecology & Hydrology, © NERC (CEH). © Crown copyright and database rights 2021 Ordnance Survey 100024198.

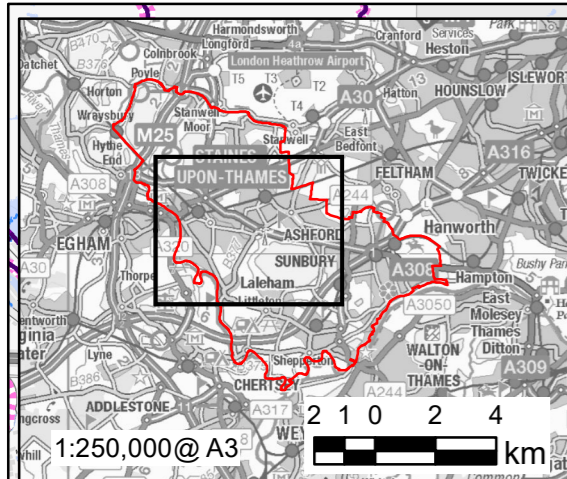
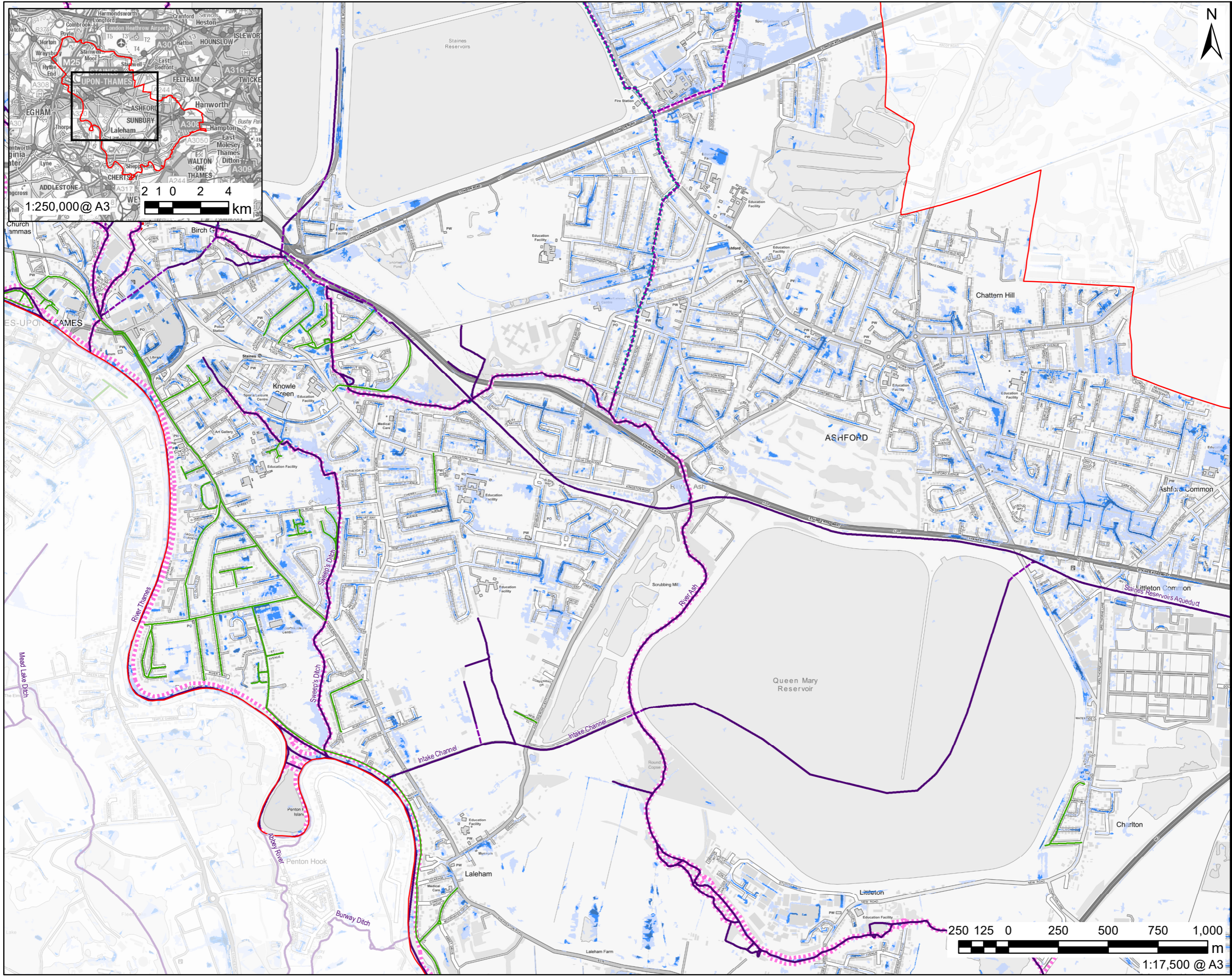
**ISSUE PURPOSE**  
FOR INFORMATION

**PROJECT NUMBER**  
60559796

**SHEET TITLE**  
Risk of Flooding from Surface Water

**SHEET NUMBER**  
Figure 11A

This drawing has been prepared for the use of AECOM's client. It may not be used, modified, reproduced or relied upon by third parties, except as agreed by AECOM or as required by law. AECOM accepts no responsibility, and disclaims any liability whatsoever, to any party that uses or relies on this drawing without AECOM's express written consent. Do not scale this document. All measurements must be obtained from the stated dimensions.



**LEGEND**

- Speltorne District Boundary
- Historic Flood Record
- Surface Watercourse
- Culverted Watercourse

**Flood Defences**

- Embankment
- High Ground
- Simple Culvert
- Wall

**Risk of Flooding from Surface Water**

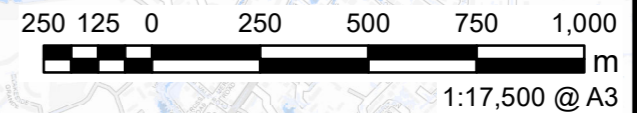
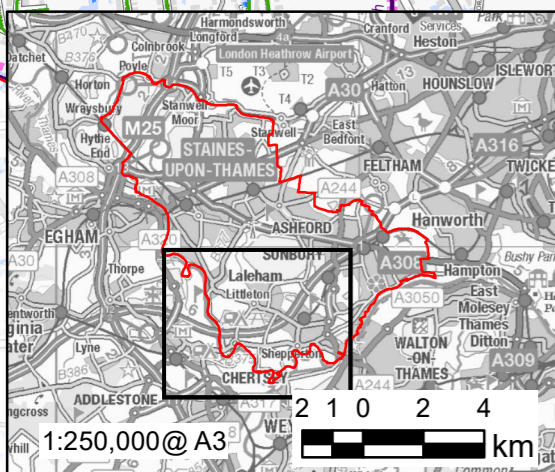
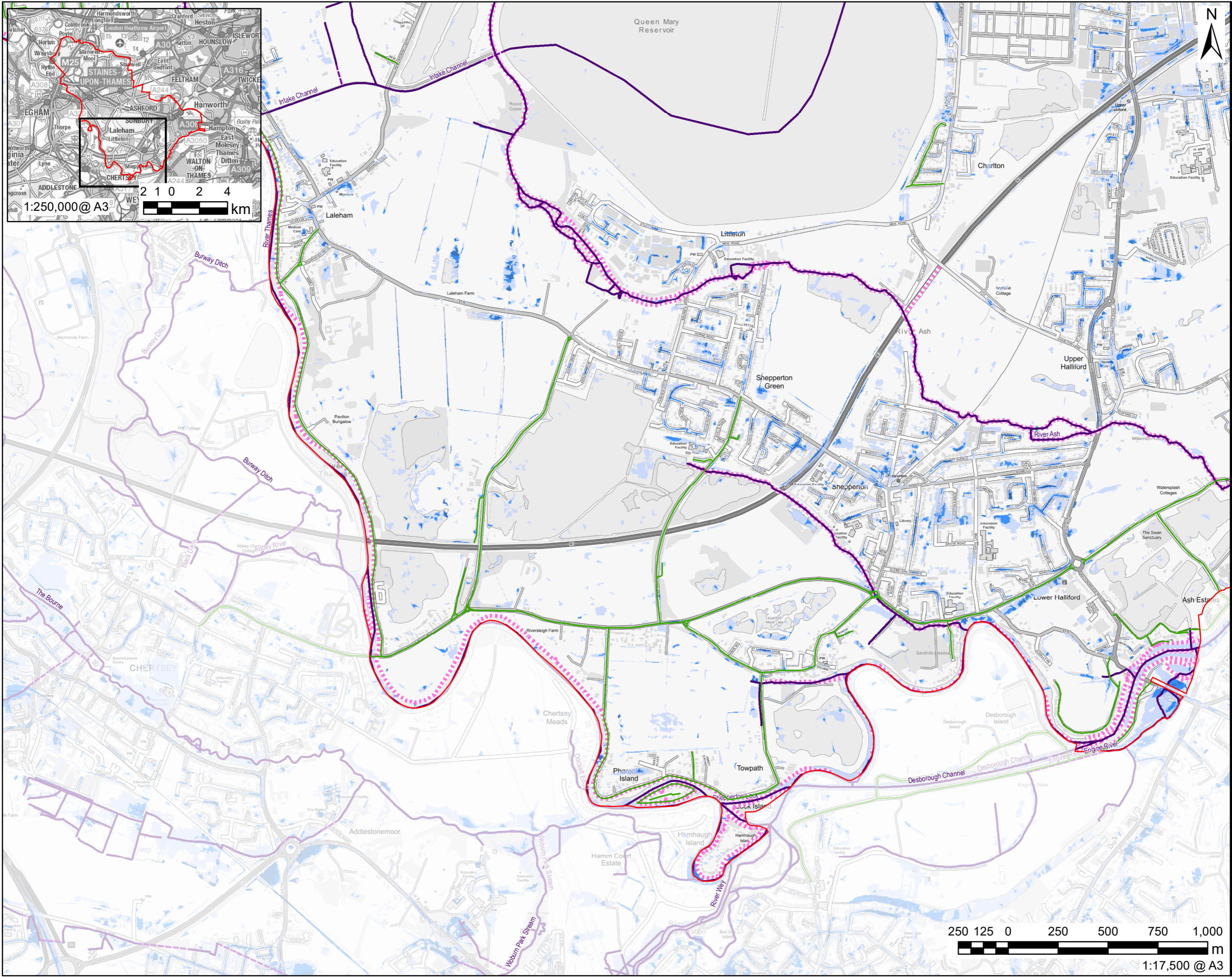
- 3.3% AEP (High Probability)
- 1% AEP (Medium Probability)
- 0.1% AEP (Low Probability)

**NOTES**

Contains Ordnance Survey Data  
 © Crown Copyright and database right 2021. © Environment Agency copyright and/or database right 2021. All rights reserved. Some features of this map are based on digital spatial data from the Centre for Ecology & Hydrology, © NERC (CEH). © Crown copyright and database rights 2021 Ordnance Survey 100024198.



This drawing has been prepared for the use of AECOM's client. It may not be used, modified, reproduced or relied upon by third parties, except as agreed by AECOM or as required by law. AECOM accepts no responsibility and disclaims any liability whatsoever to any party that uses or relies on this drawing without AECOM's express written consent. Do not scale this document. All measurements must be obtained from the stated dimensions.



- LEGEND**
- Speltorne District Boundary
  - Historic Flood Record
  - Surface Watercourse
  - Culverted Watercourse
- Flood Defences**
- Embankment
  - High Ground
  - Simple Culvert
  - Wall
- Risk of Flooding from Surface Water**
- 3.3% AEP (High Probability)
  - 1% AEP (Medium Probability)
  - 0.1% AEP (Low Probability)

**NOTES**

Contains Ordnance Survey Data  
© Crown Copyright and database right 2021. © Environment Agency copyright and/or database right 2021. All rights reserved. Some features of this map are based on digital spatial data from the Centre for Ecology & Hydrology, © NERC (CEH). © Crown copyright and database rights 2021 Ordnance Survey 100024198.

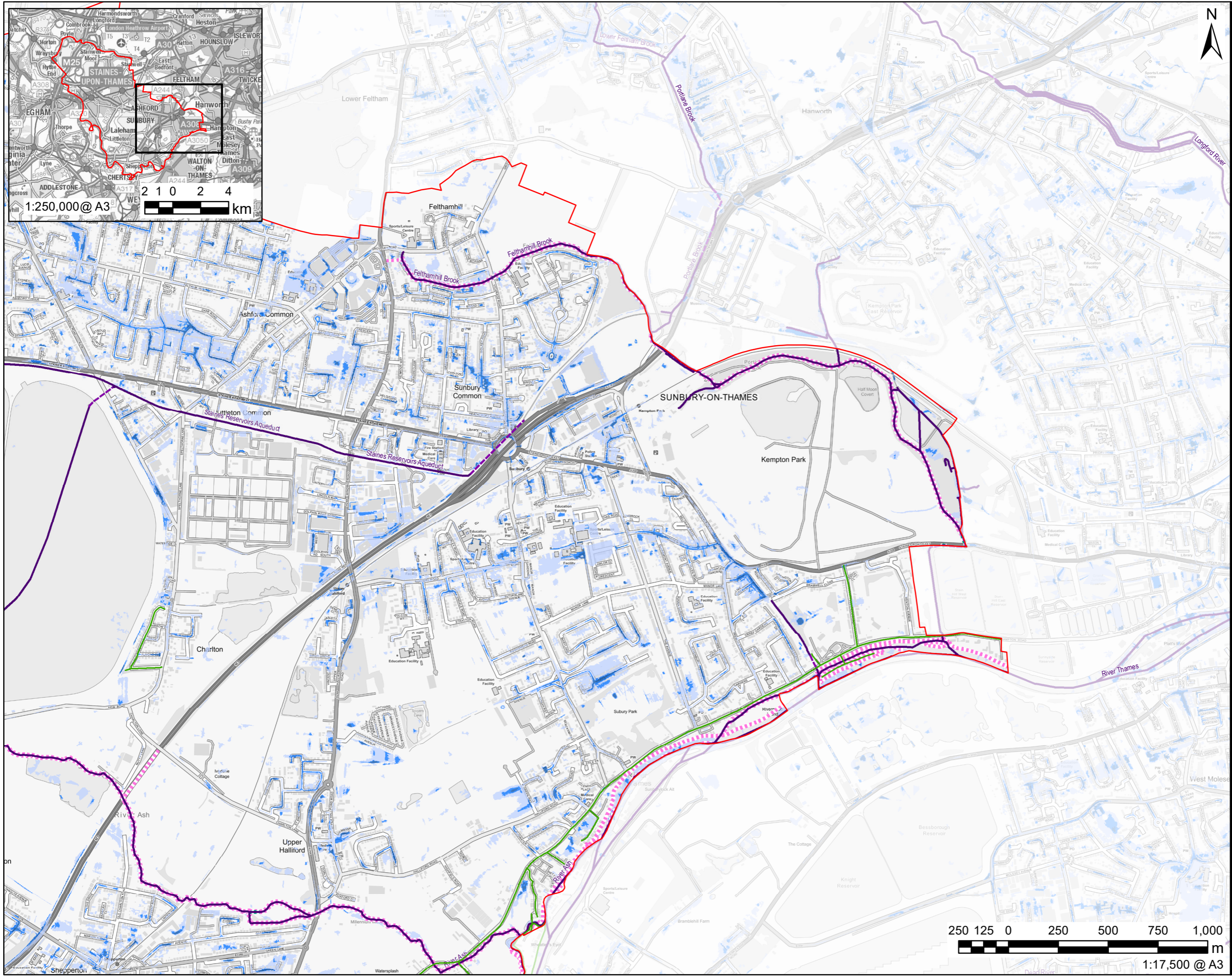
**ISSUE PURPOSE**  
FOR INFORMATION

**PROJECT NUMBER**  
60559796

**SHEET TITLE**  
Risk of Flooding from Surface Water

**SHEET NUMBER**  
Figure 11C

This drawing has been prepared for the use of AECOM's client. It may not be used, modified, reproduced or relied upon by third parties, except as agreed by AECOM or as required by law. AECOM accepts no responsibility, and disclaims any liability whatsoever, to any party that uses or relies on this drawing without AECOM's express written consent. Do not scale this document. All measurements must be obtained from the stated dimensions.



- LEGEND**
- Spelthorne District Boundary
  - Historic Flood Record
  - Surface Watercourse
  - Culverted Watercourse
- Flood Defences**
- Embankment
  - High Ground
  - Simple Culvert
  - Wall
- Risk of Flooding from Surface Water**
- 3.3% AEP (High Probability)
  - 1% AEP (Medium Probability)
  - 0.1% AEP (Low Probability)

**NOTES**

Contains Ordnance Survey Data  
© Crown Copyright and database right 2021. © Environment Agency copyright and/or database right 2021. All rights reserved. Some features of this map are based on digital spatial data from the Centre for Ecology & Hydrology, © NERC (CEH). © Crown copyright and database rights 2021 Ordnance Survey 100024198.

**ISSUE PURPOSE**  
FOR INFORMATION  
**PROJECT NUMBER**

60559796  
**SHEET TITLE**  
Risk of Flooding from Surface Water

**SHEET NUMBER**  
Figure 11D

